

South Carolina Economic Outlook

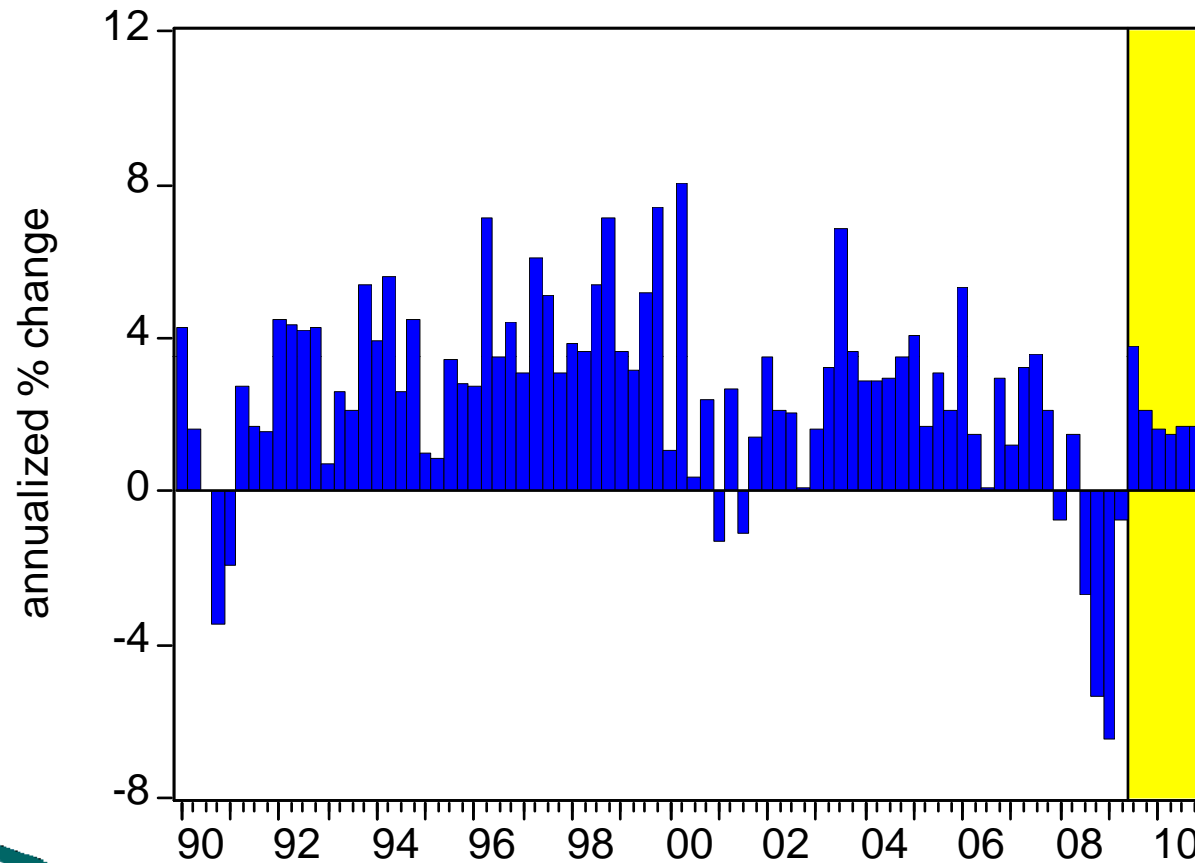
Presented to the S.C. Association of Regional Councils

November 23, 2009

Dr. Don Schunk
Research Economist
BB&T Center for Economic & Community Development
Coastal Carolina University

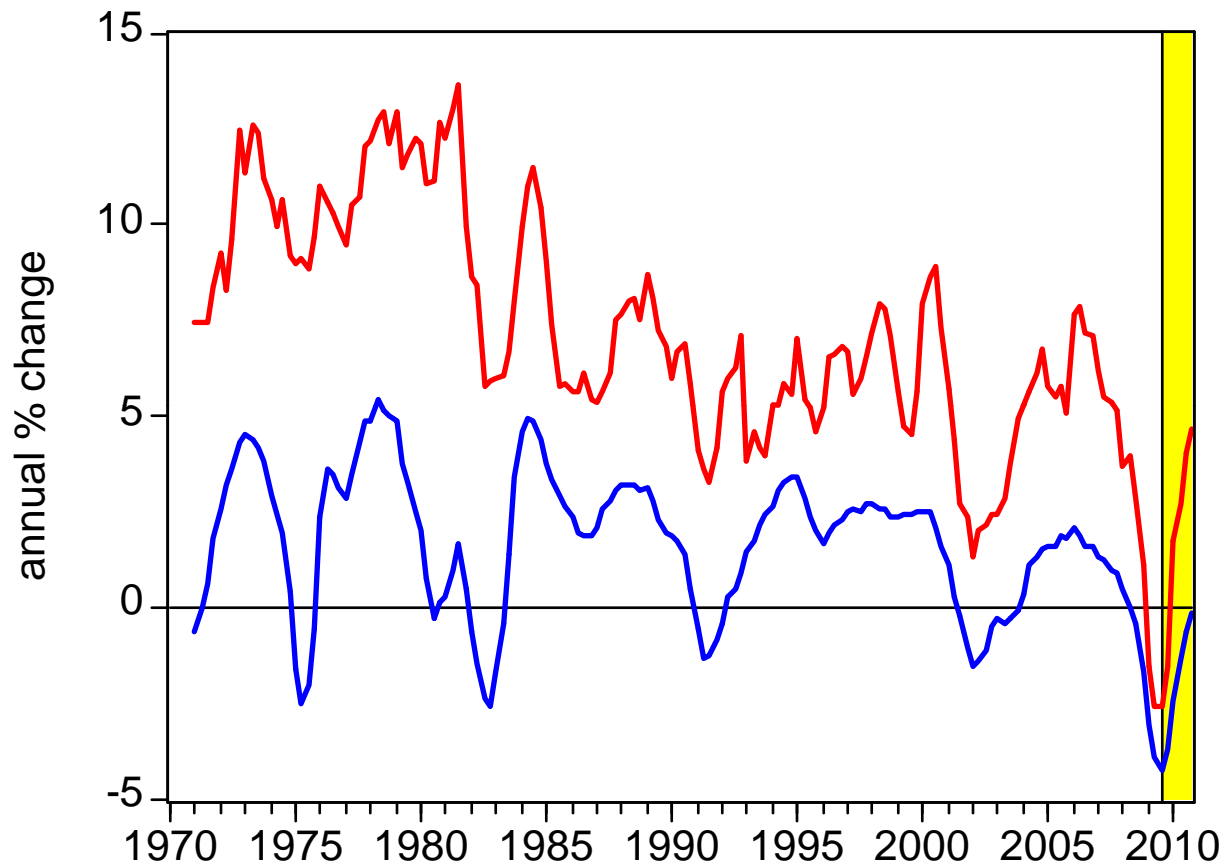


U.S. Real GDP Growth 1990Q1 – 2010Q4



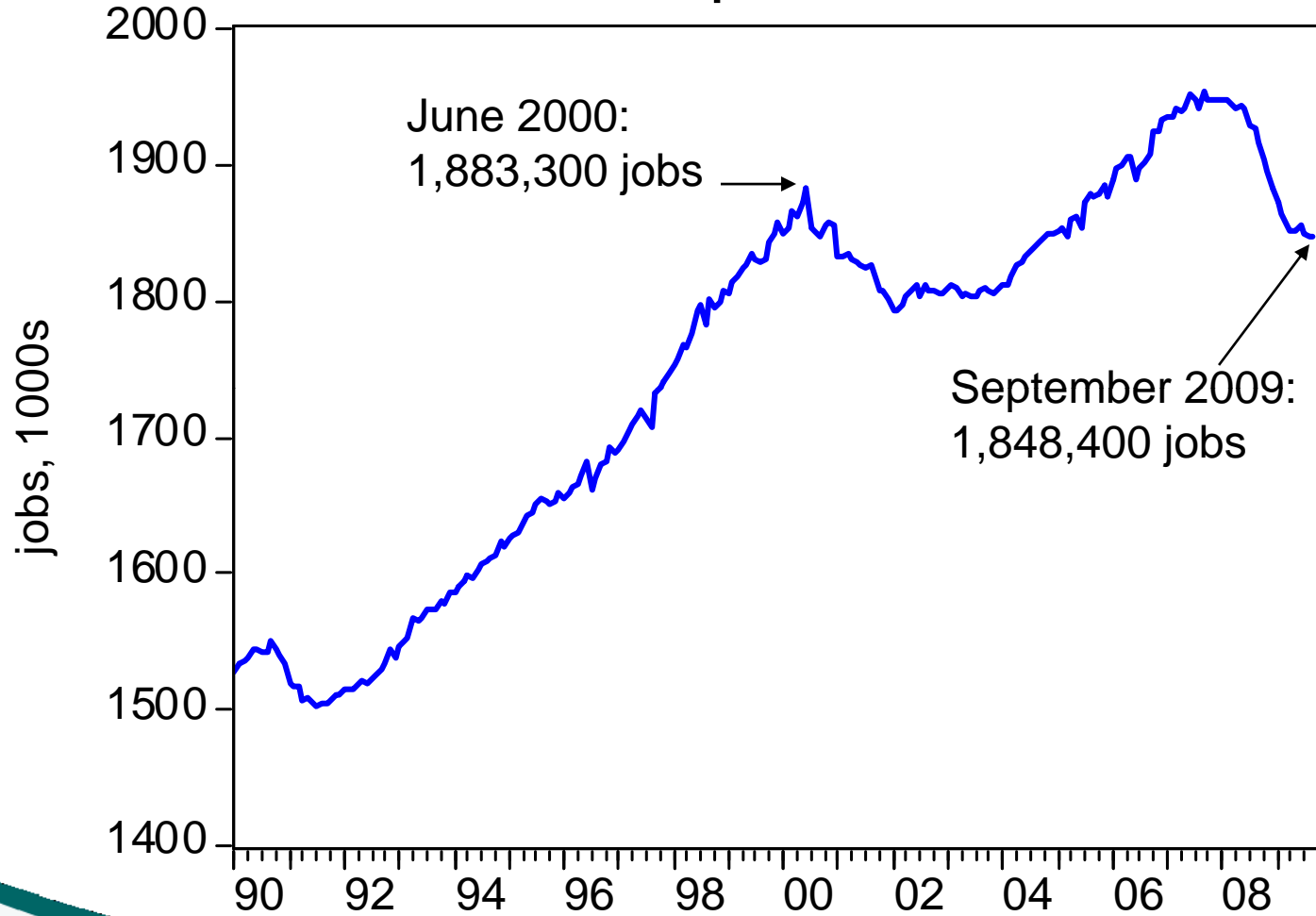
2000	4.1%
2001	1.1%
2002	1.8%
2003	2.5%
2004	3.6%
2005	3.1%
2006	2.7%
2007	2.1%
2008	0.4%
2009	-2.5%
2010	1.8%

U.S. Job and Income Growth 1970Q1 – 2010Q4

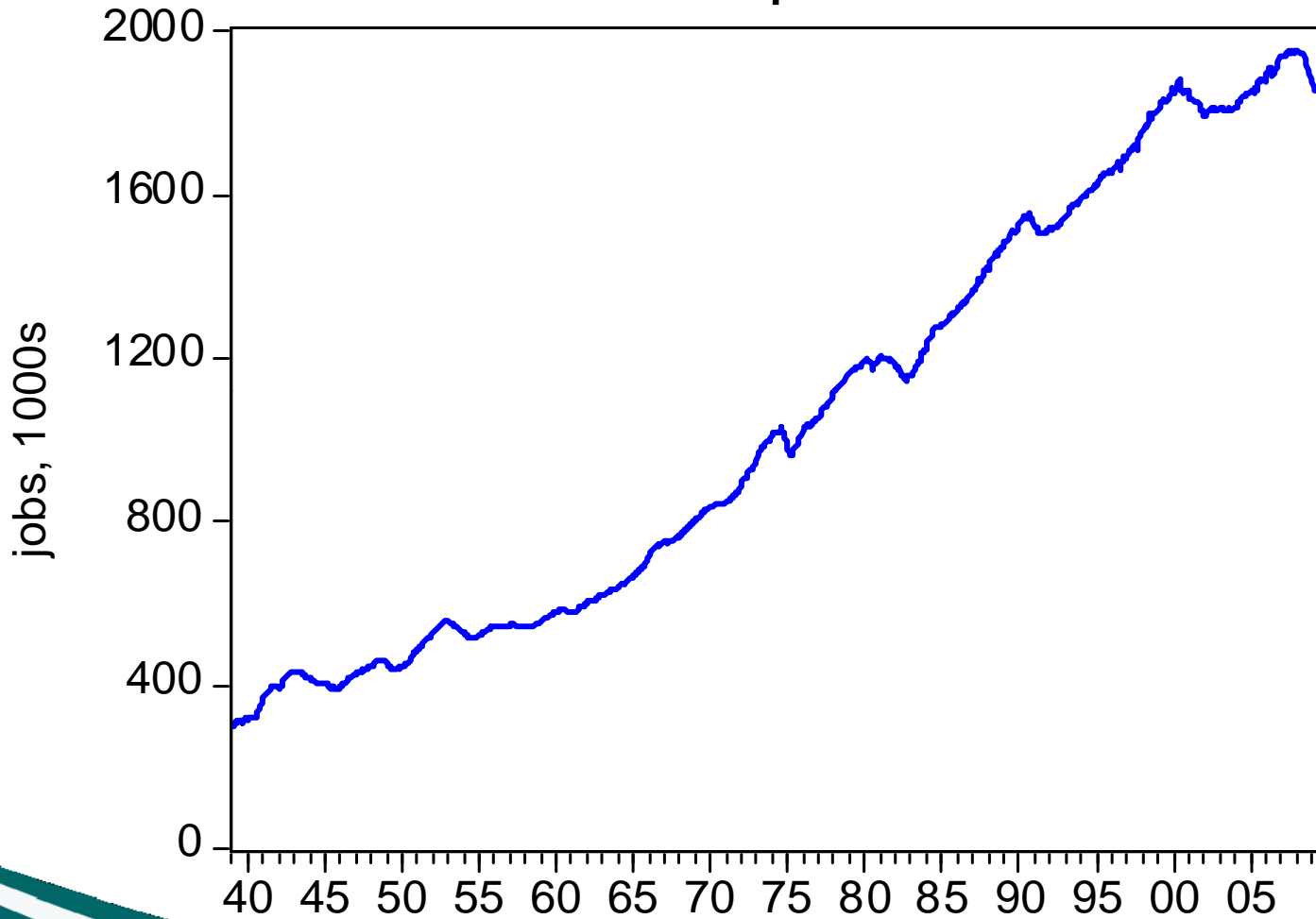


— U.S. Job Growth
— U.S. Income Growth

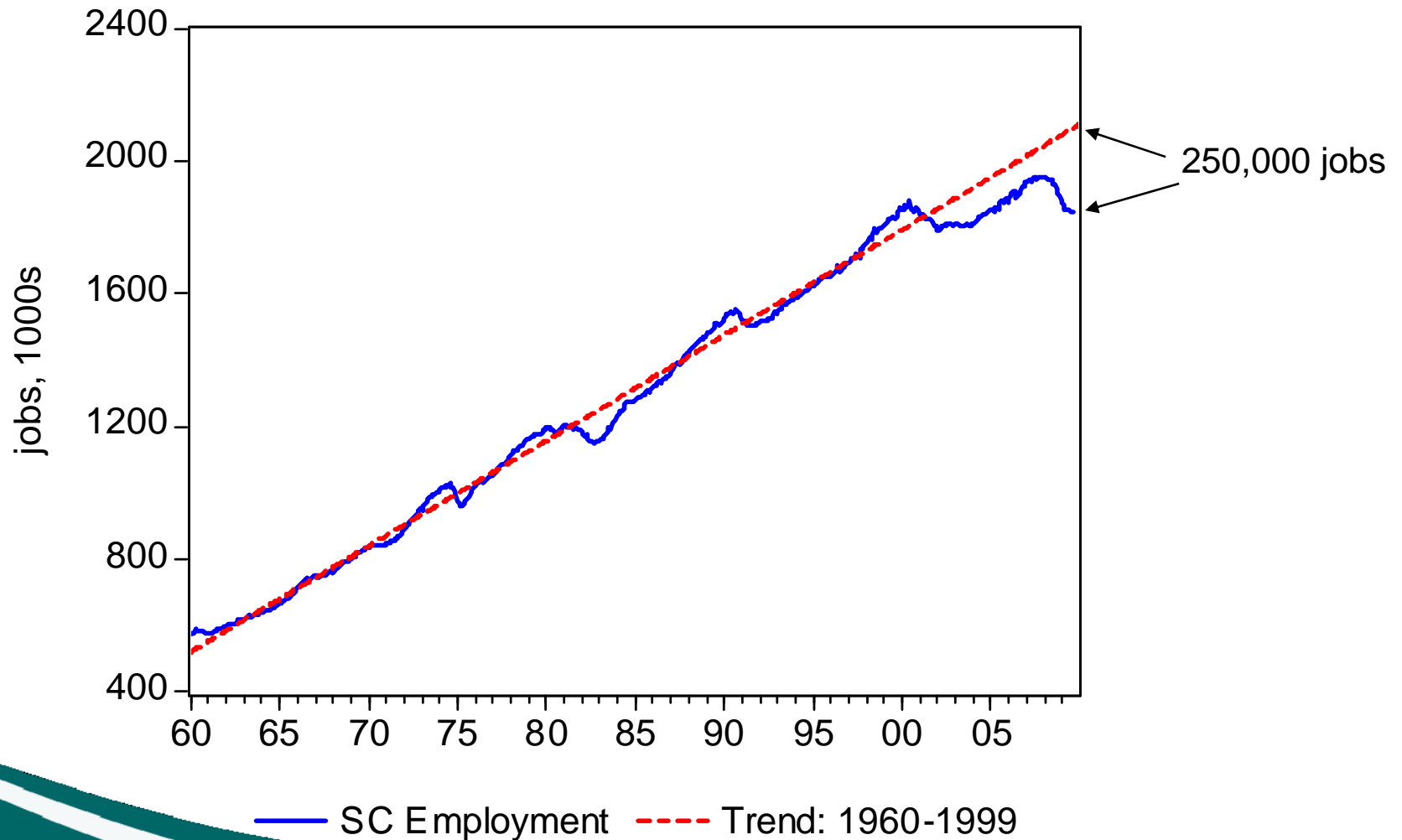
SC Total Employment Jan. 1990 – September 2009



SC Total Employment Jan. 1939 – September 2009



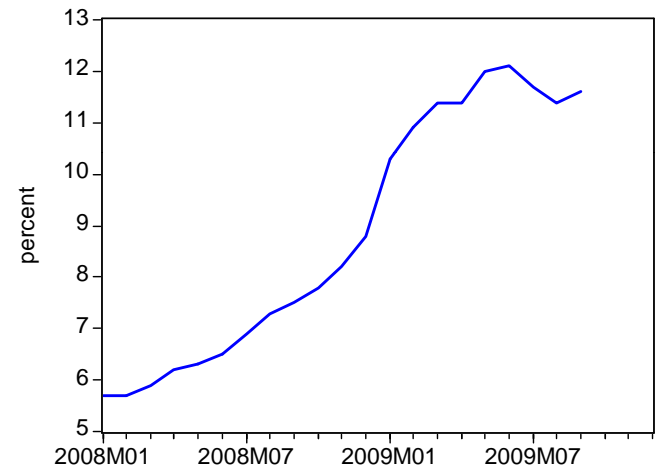
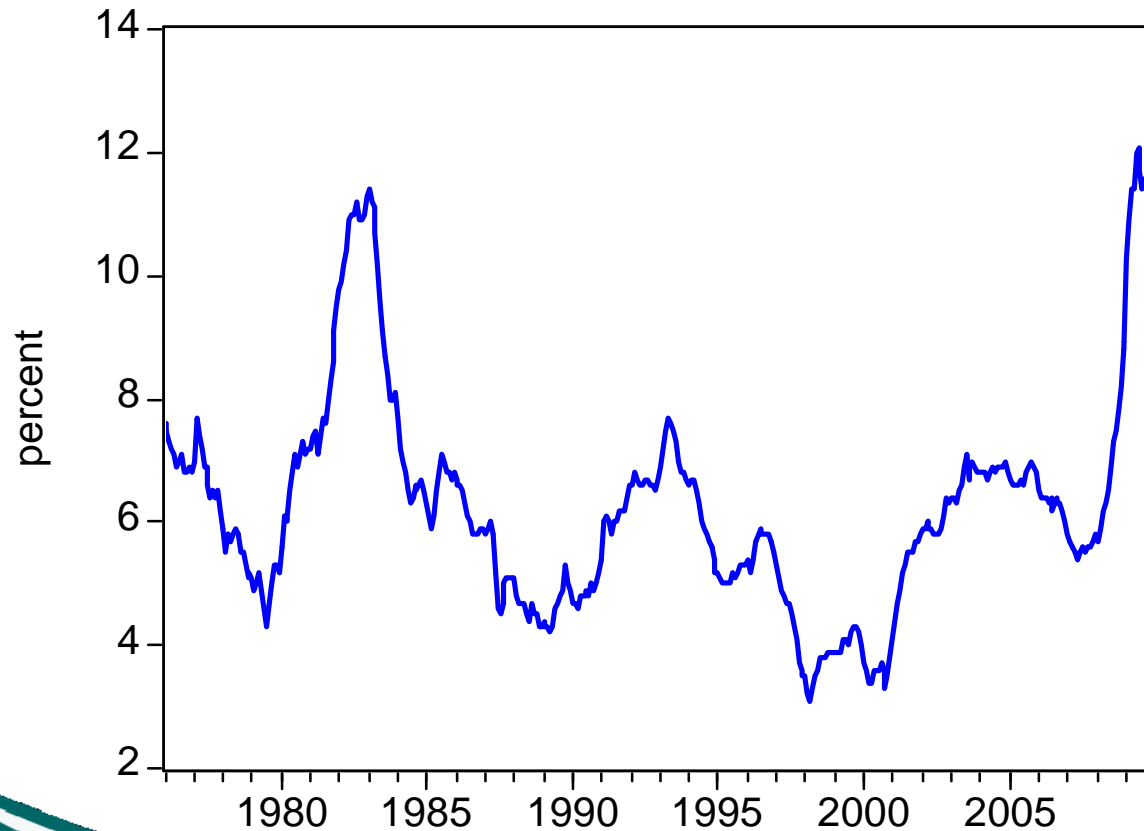
SC Total Employment Jan. 1960 – September 2009



Recent Unemployment Trends

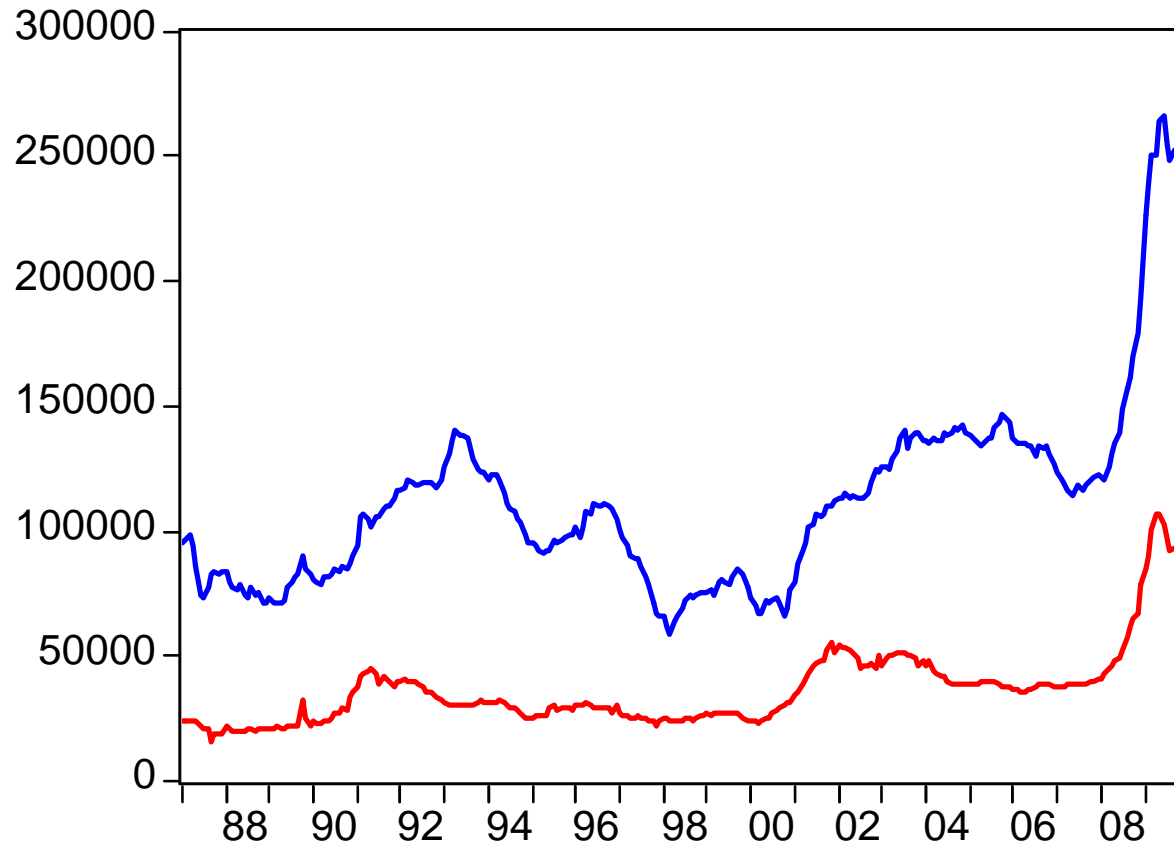
SC Unemployment Rate

Jan. 1976 – September 2009



SC Unemployed & UI Claims

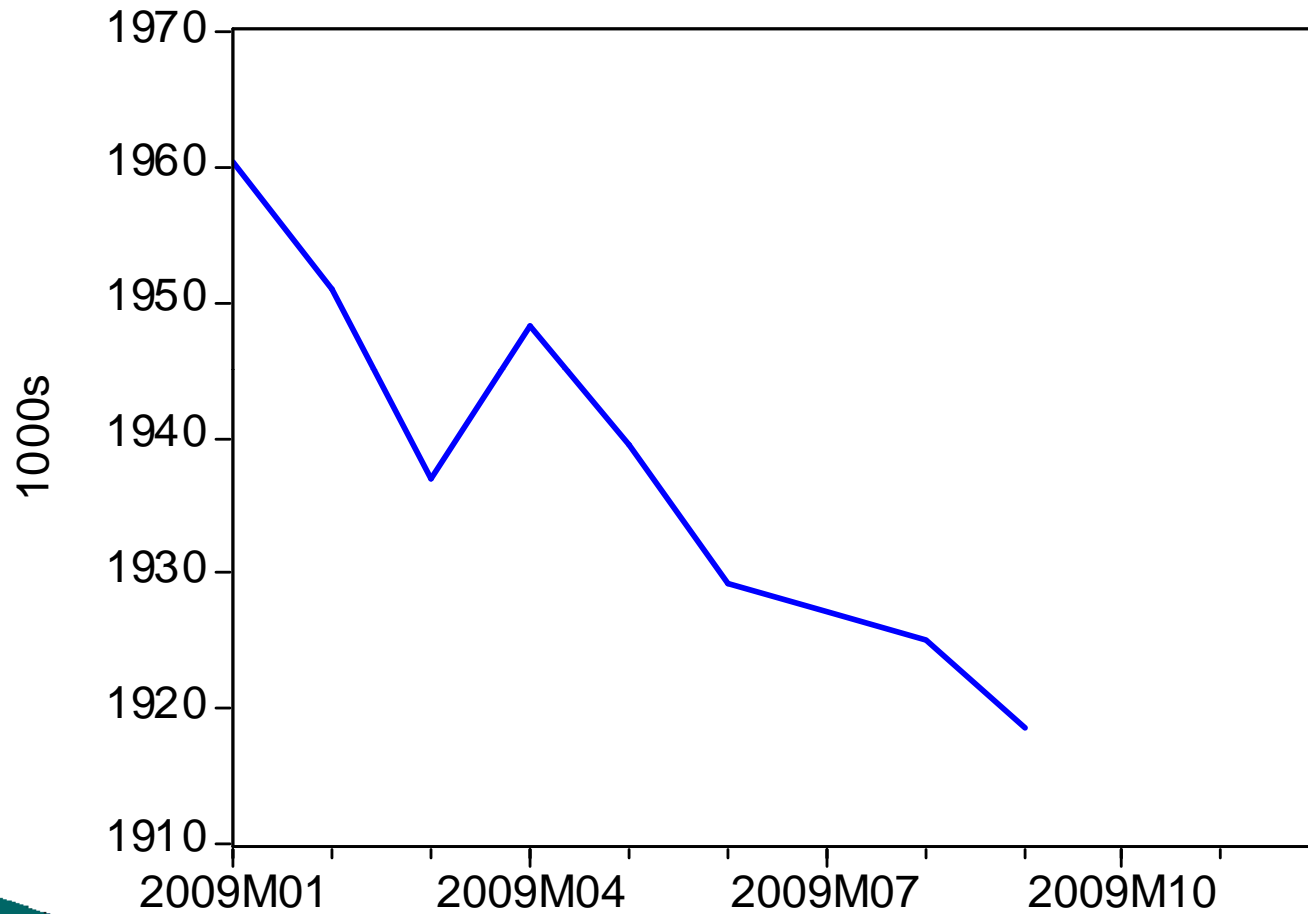
Jan. 1987 – September 2009



— Unemployed (number)
— Continued Claims

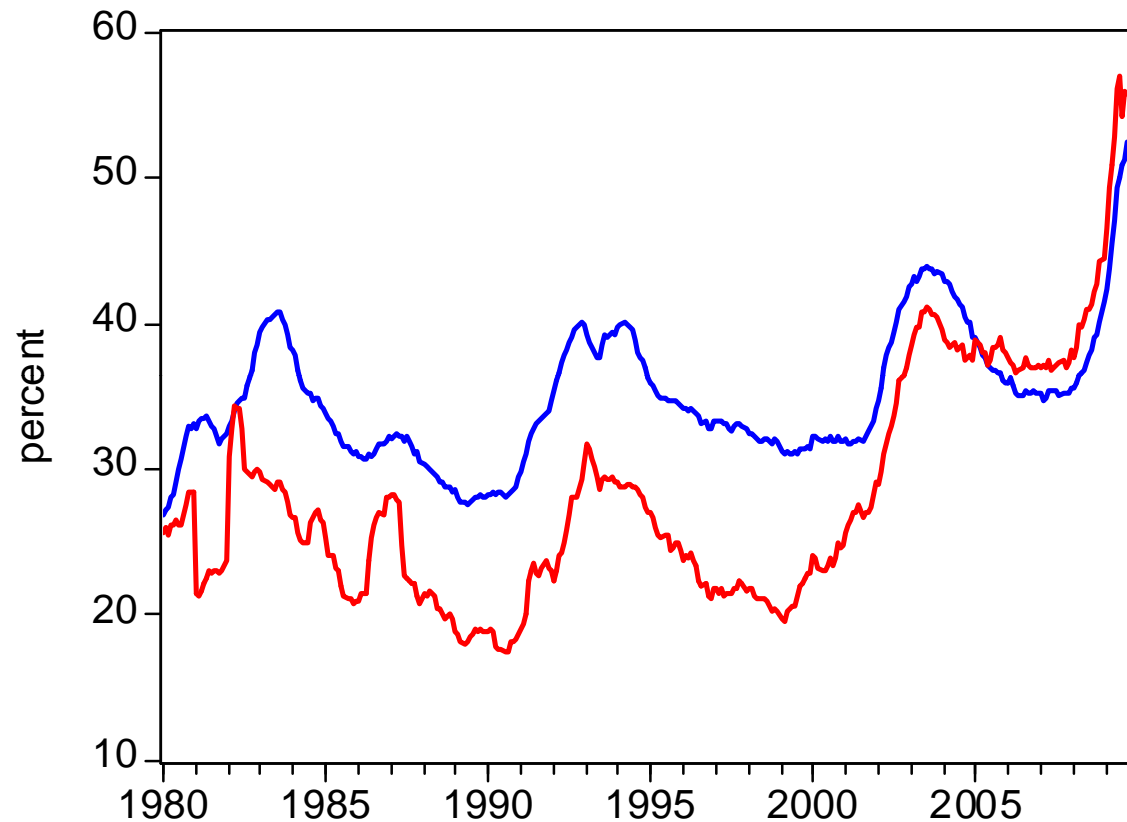
SC Employment

Jan. 2009 – September 2009



UI Exhaustion Rate

January 1980 – September 2009

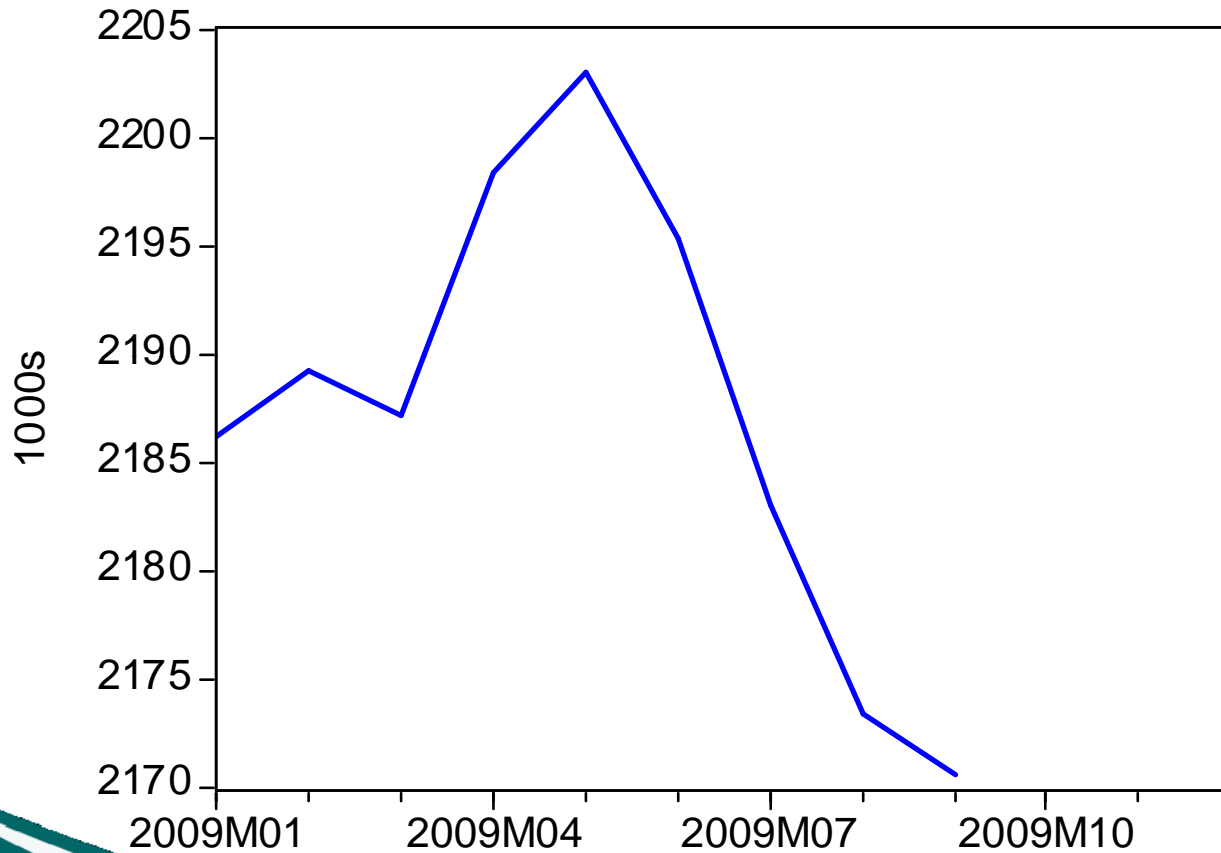


People are exhausting UI benefits at a record rate... this is why continued claims, unemployment, and unemployment rate have been falling.

— US Exhaustion Rate
— SC Exhaustion Rate

SC Labor Force

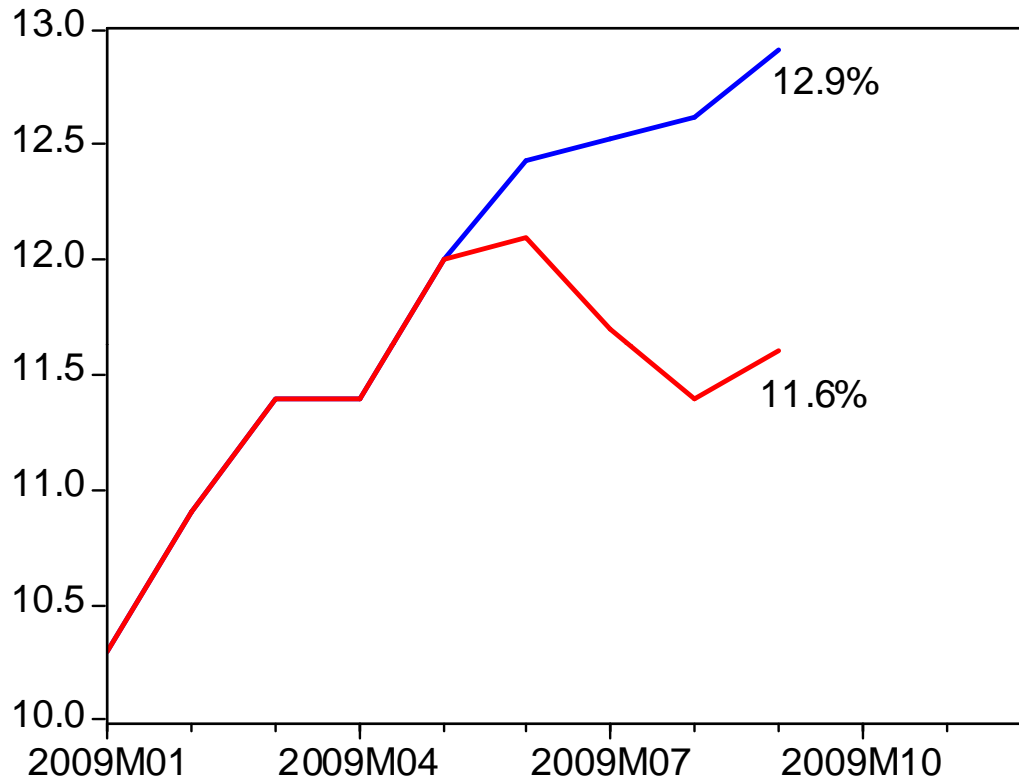
Jan. 2009 – September 2009



SC's labor force fell by 32,500 between May and September 2009

SC Unemployment Rate revisited

Jan. 2009 – September 2009

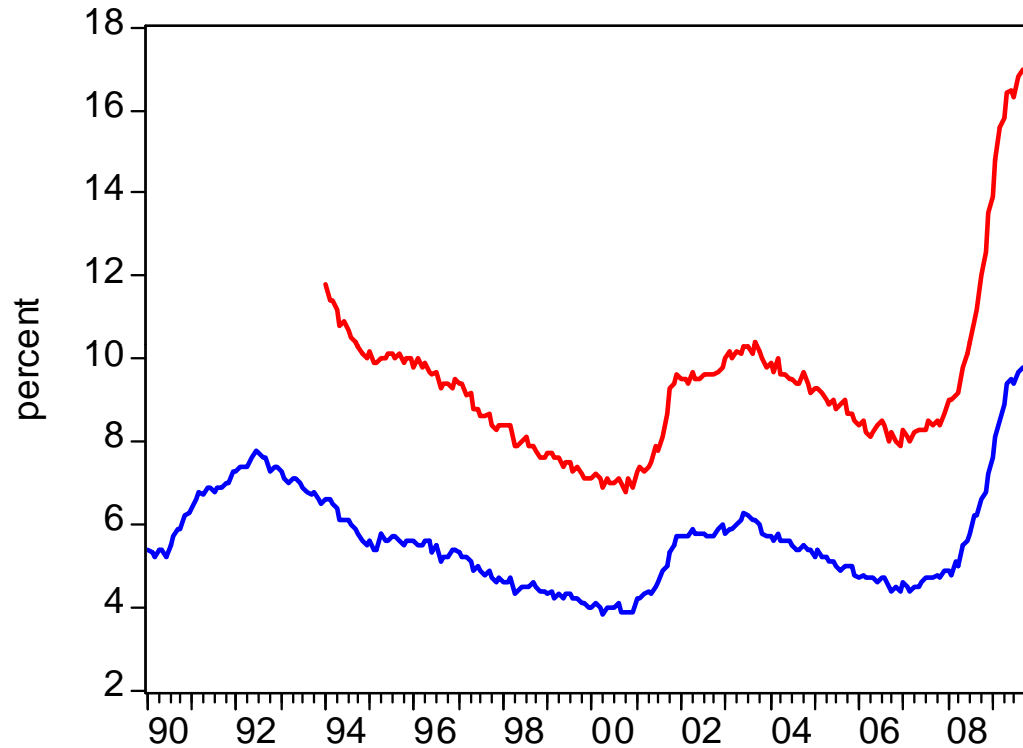


Given the actual trends in *employment*, what if the state's labor force had remained unchanged since May?

— Official Rate — Recalculated Rate

US Unemployment Rates

Jan. 1990 – September 2009

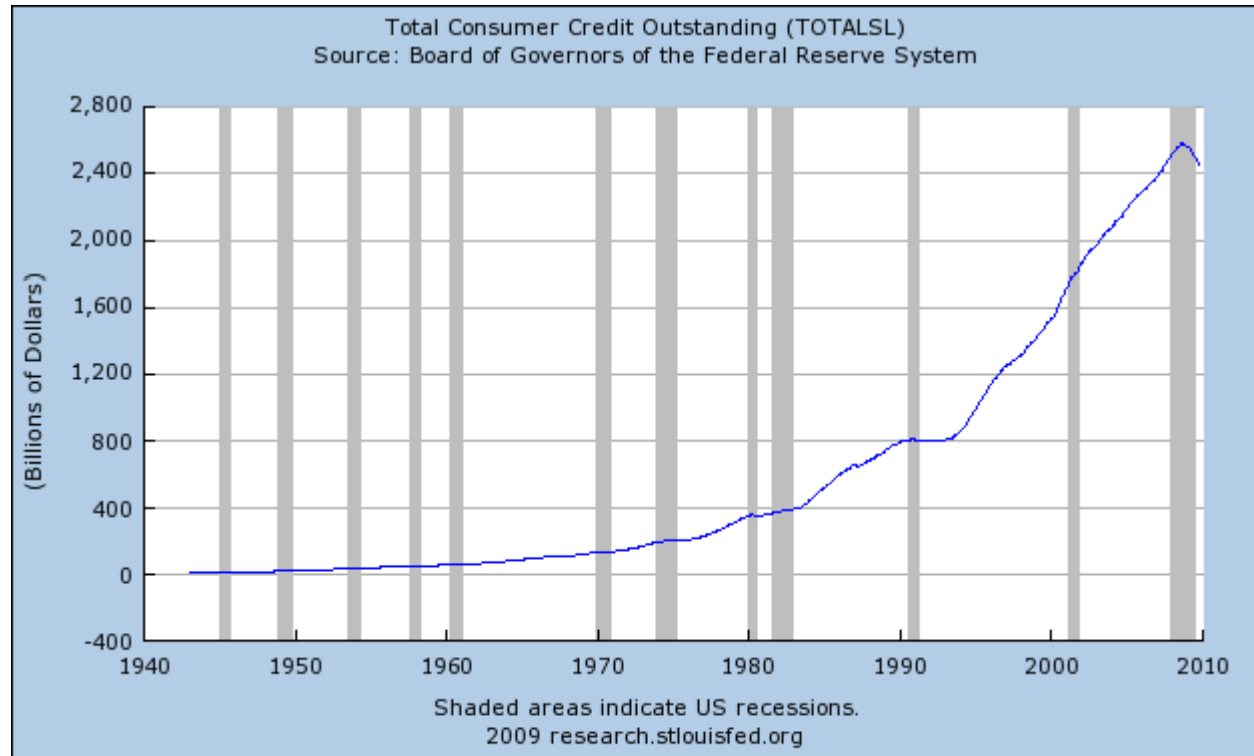


U-3 is the standard measure of unemployment. U-6 is broader, it also includes: discouraged workers, others marginally attached to the labor force, and people working part-time for economic reasons.

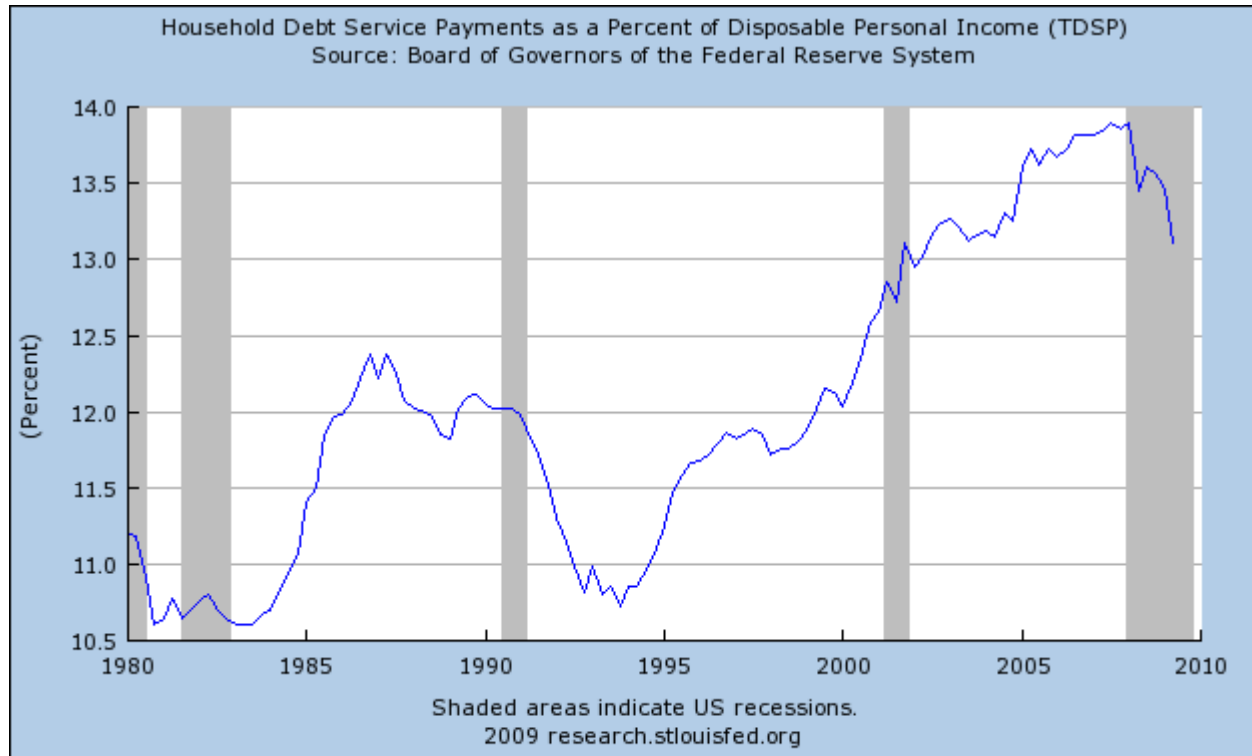
— U.S. Unemployment Rate (U-3)
— U.S. Unemployment Rate (U-6)

Headwinds Affecting Consumer Spending

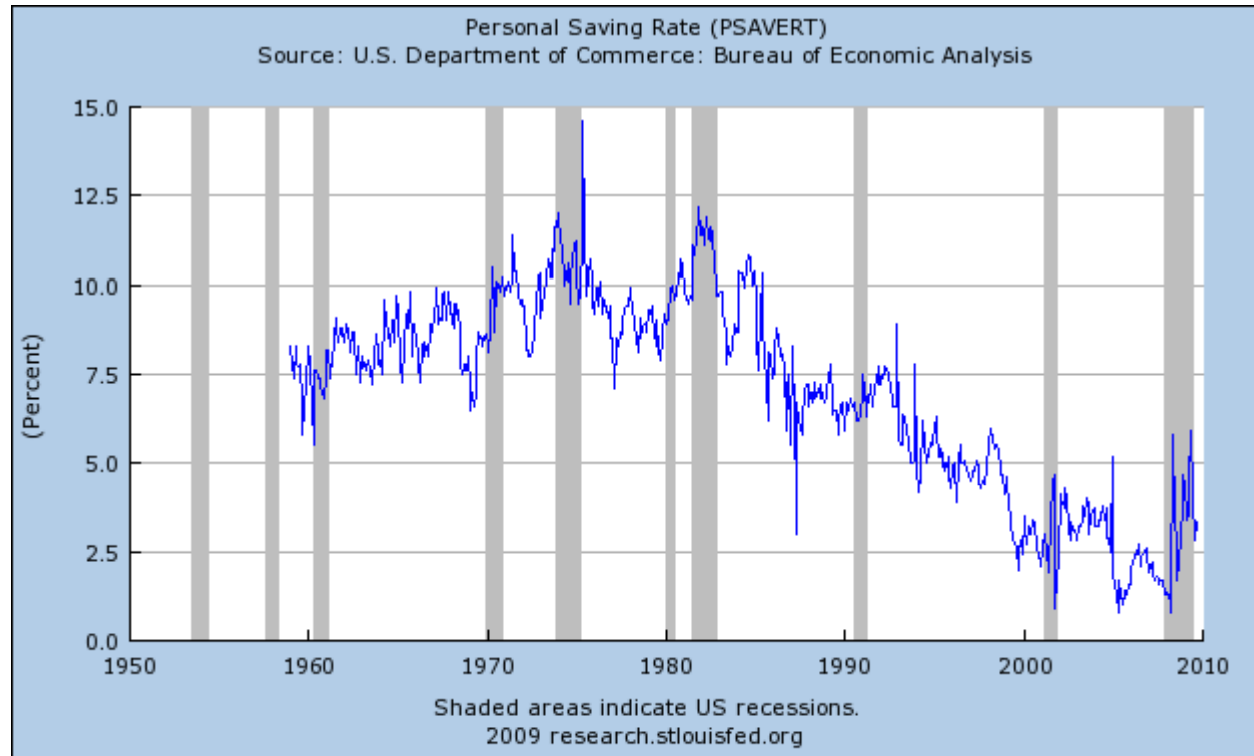
Consumer Credit Outstanding



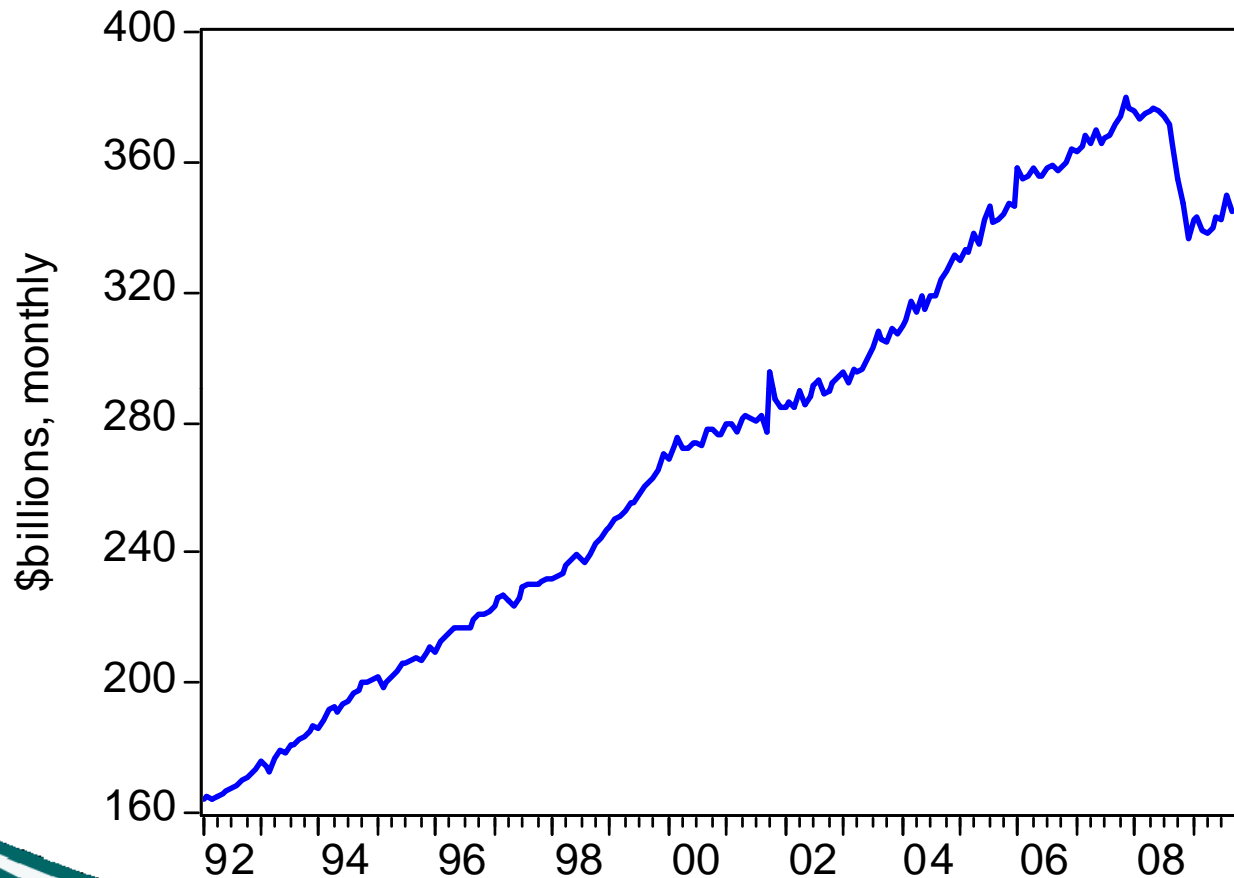
Debt Relative to Income



Personal Saving Rate



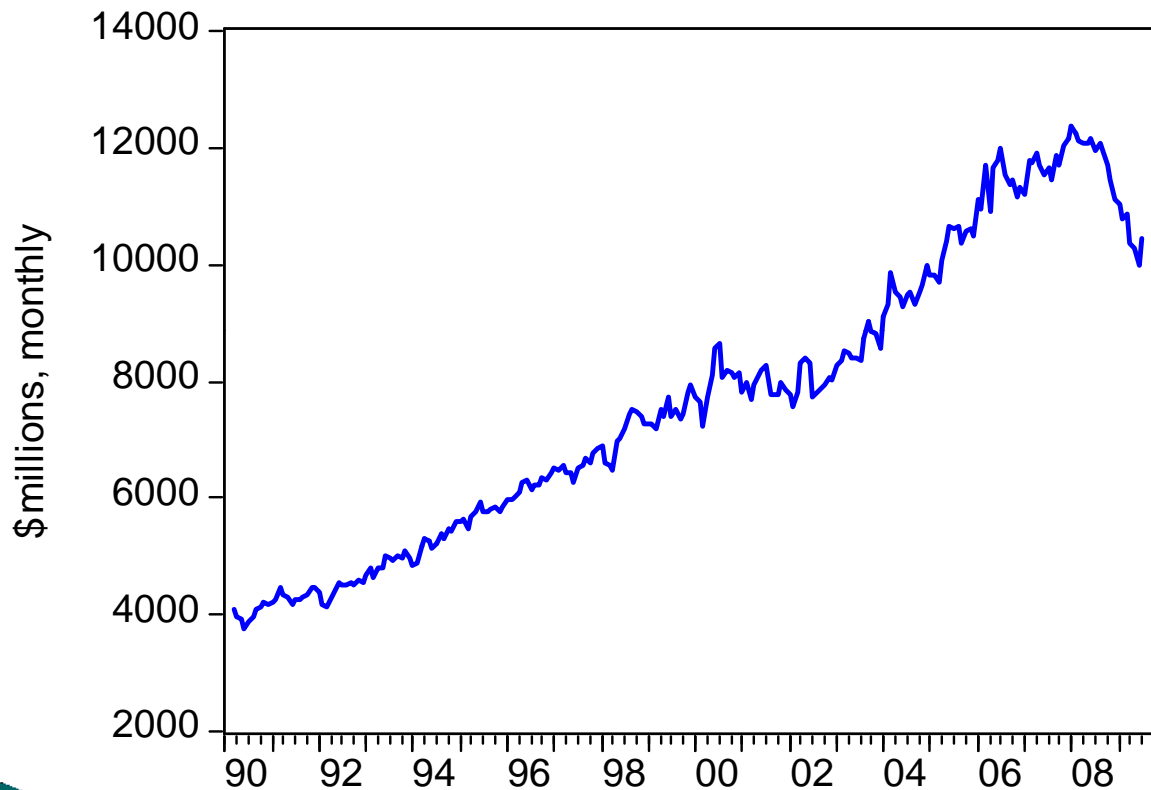
Job losses, flat incomes, household rebalancing translates into weak consumer spending



Sept. 2008 to Sept. 2009:
US Retail Sales down 5.7%

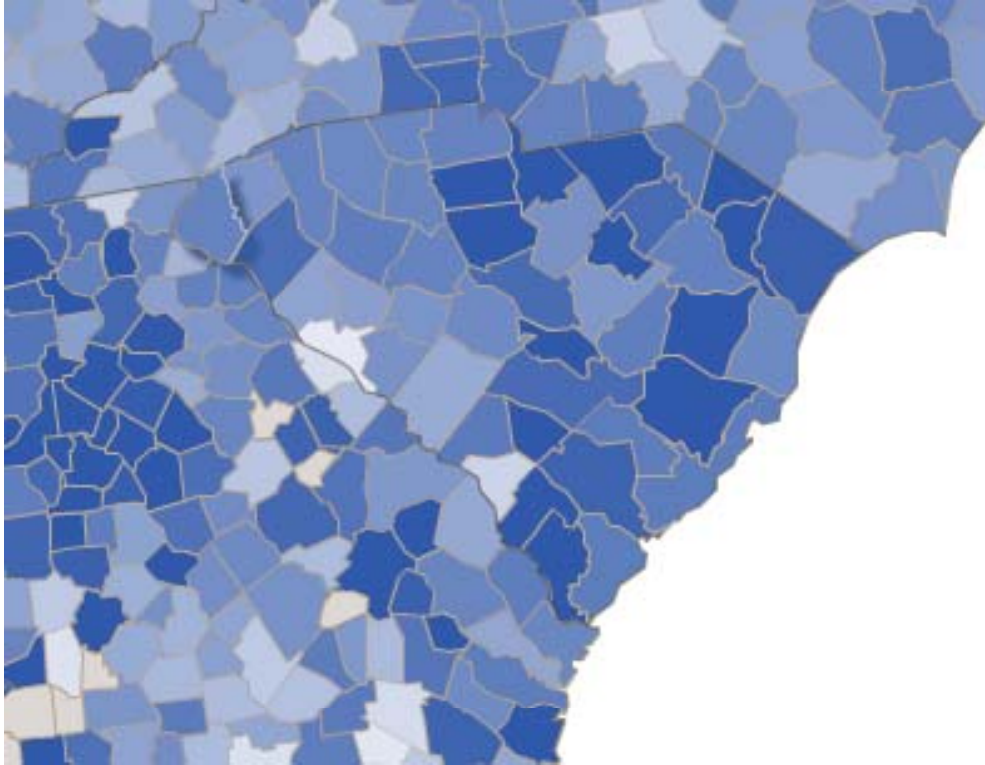
S.C. Retail Sales

Jan. 1990 – July 2009



May-July 2008 to
May-July 2009:
SC Retail Sales down 12.5%

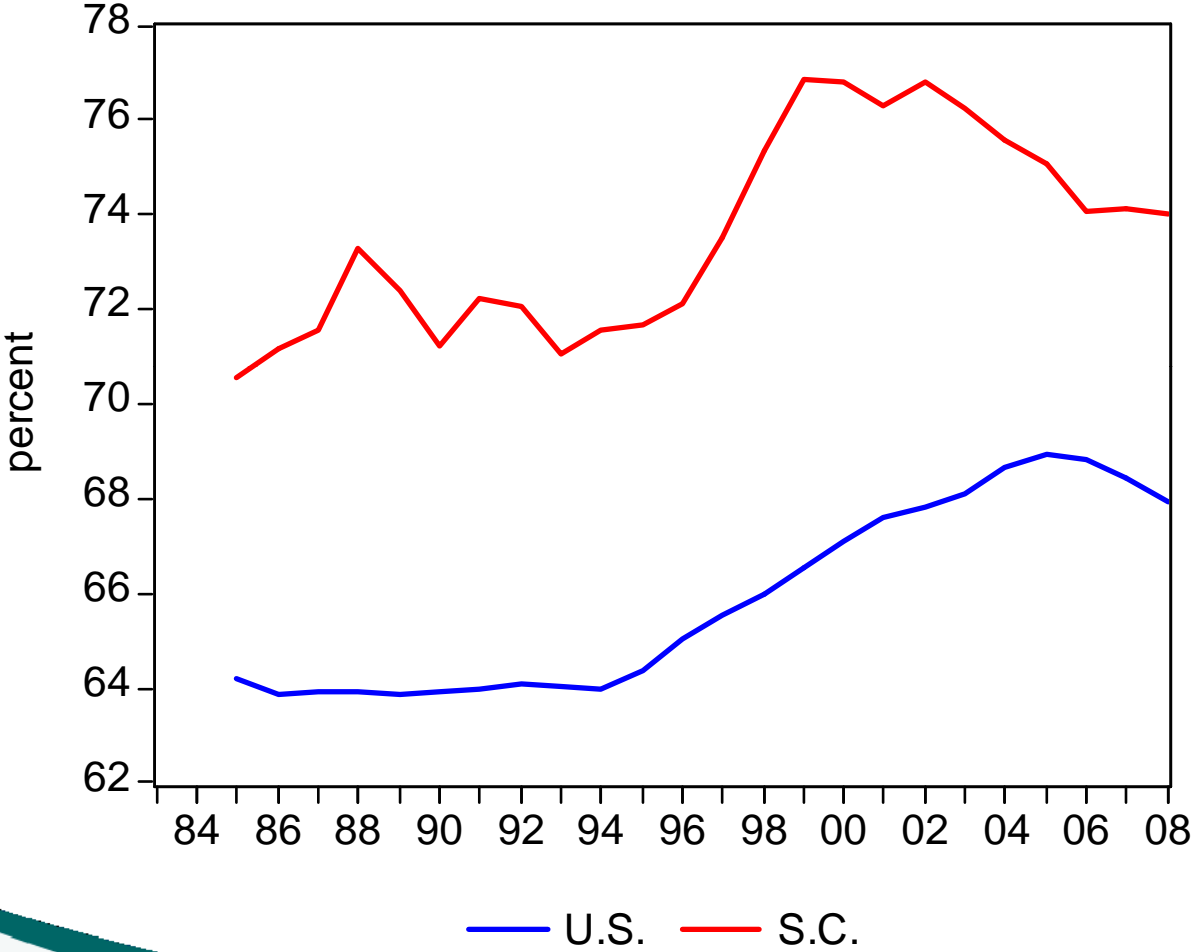
Mortgage Delinquencies



Horry	4.76%
Georgetown	3.46%
Williamsburg	5.61%
Marion	5.33%
Charleston	3.85%
Berkeley	4.94%
Dorchester	3.85%
Florence	3.69%
Lexington	3.44%
Richland	4.34%

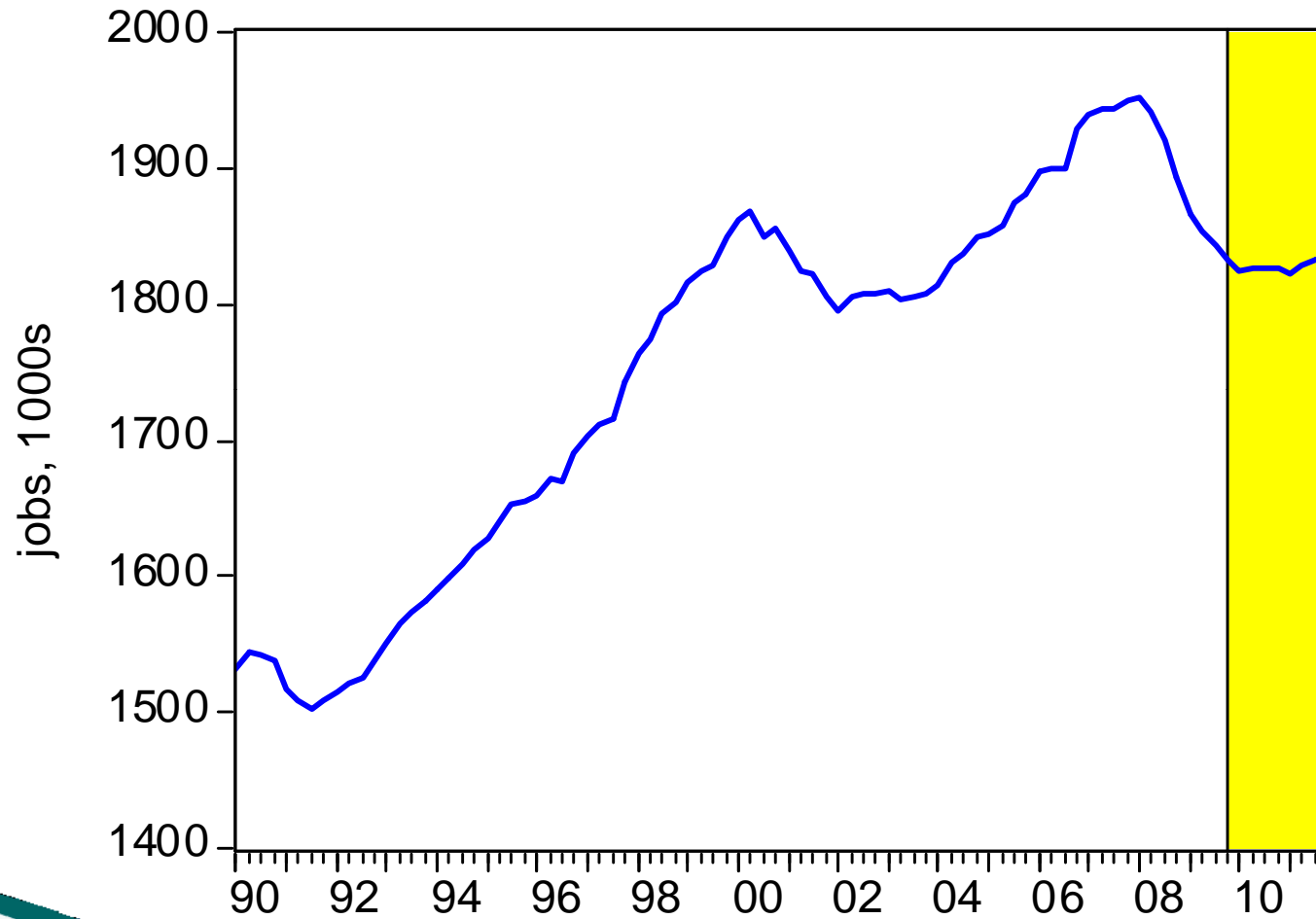
Homeownership Rates

1985 - 2008



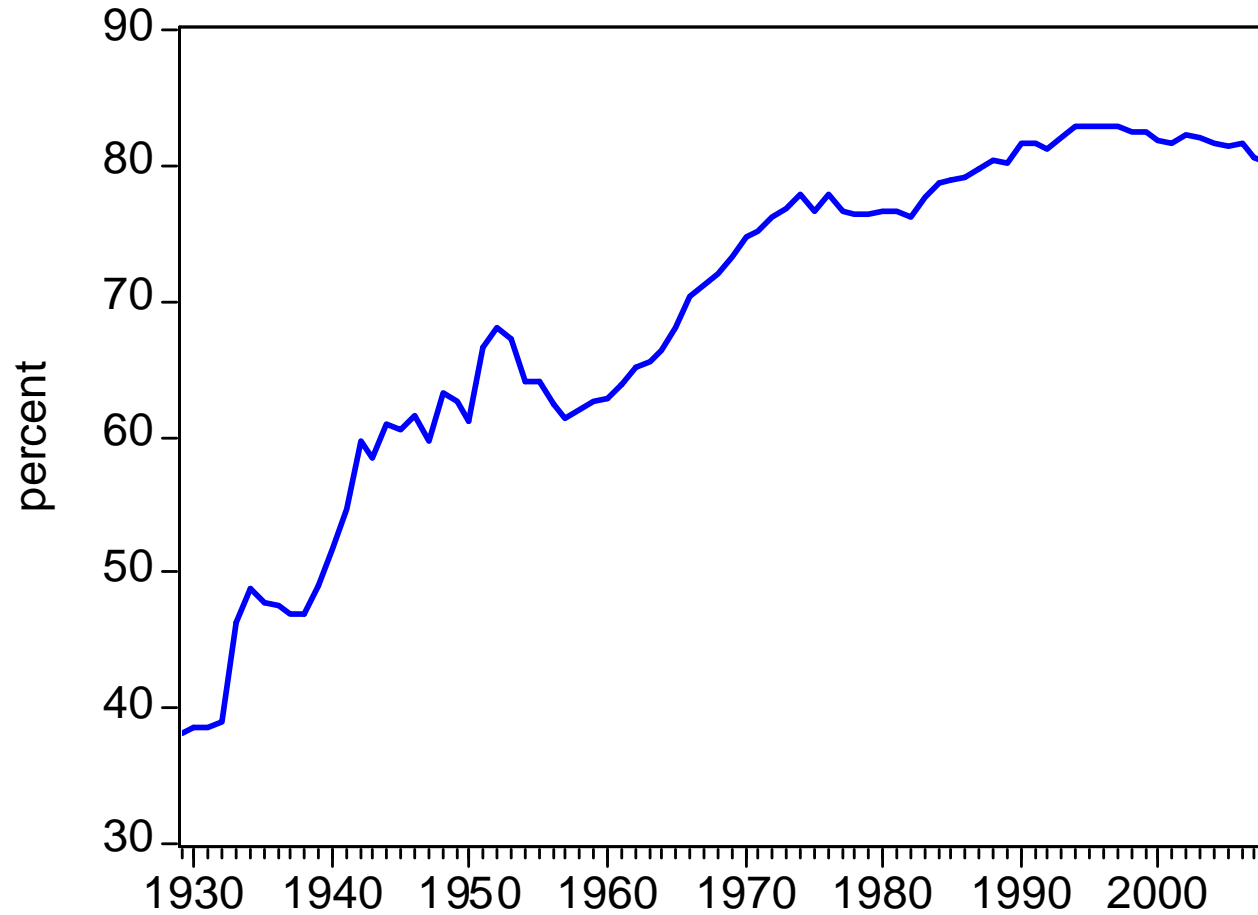
S.C. Employment

1990Q1 – 2011Q4

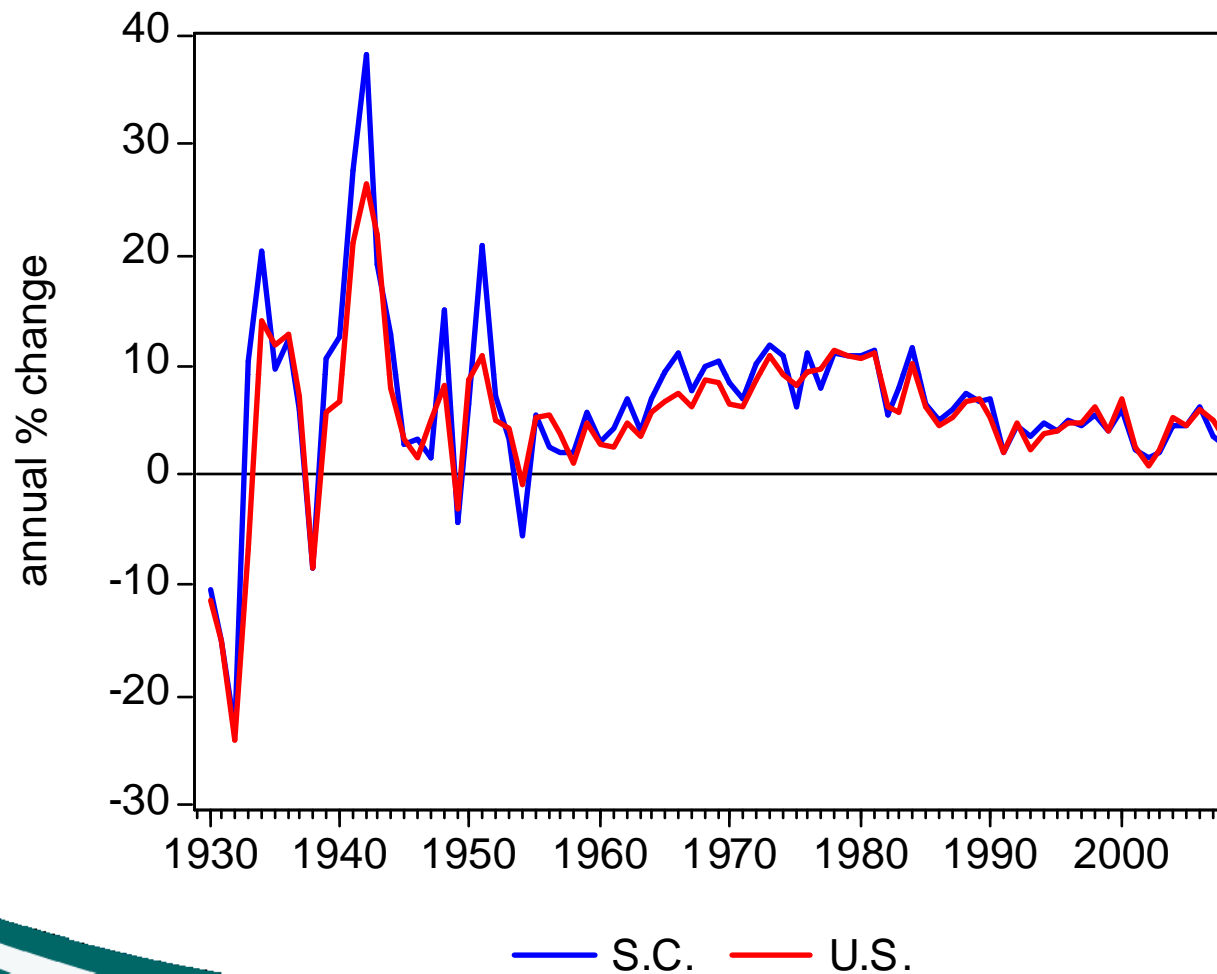


The State of Economic Development in South Carolina

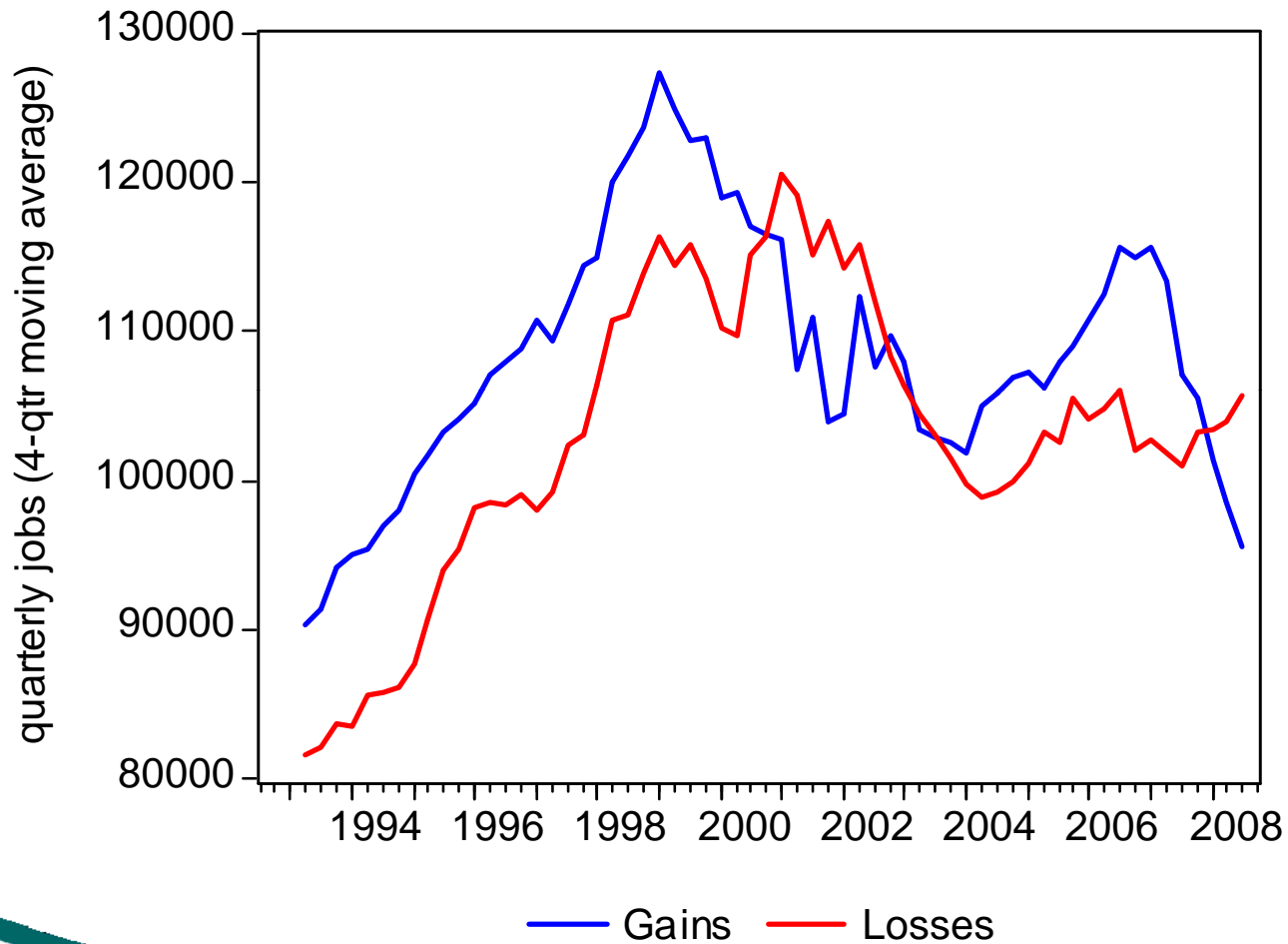
Per Capita Income: SC Relative to US 1929 - 2008



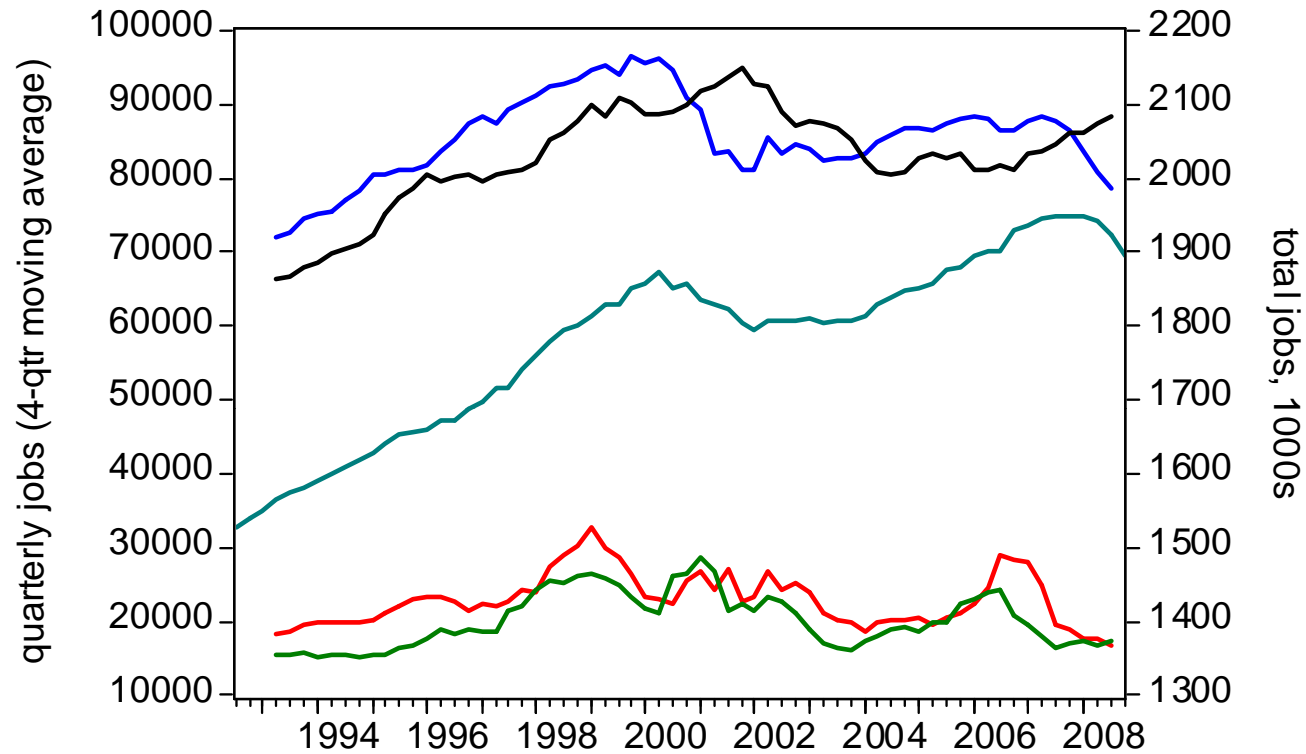
Per Capita Income: Annual Growth 1930 - 2008



SC Employment Dynamics 1992Q3 – 2008Q3

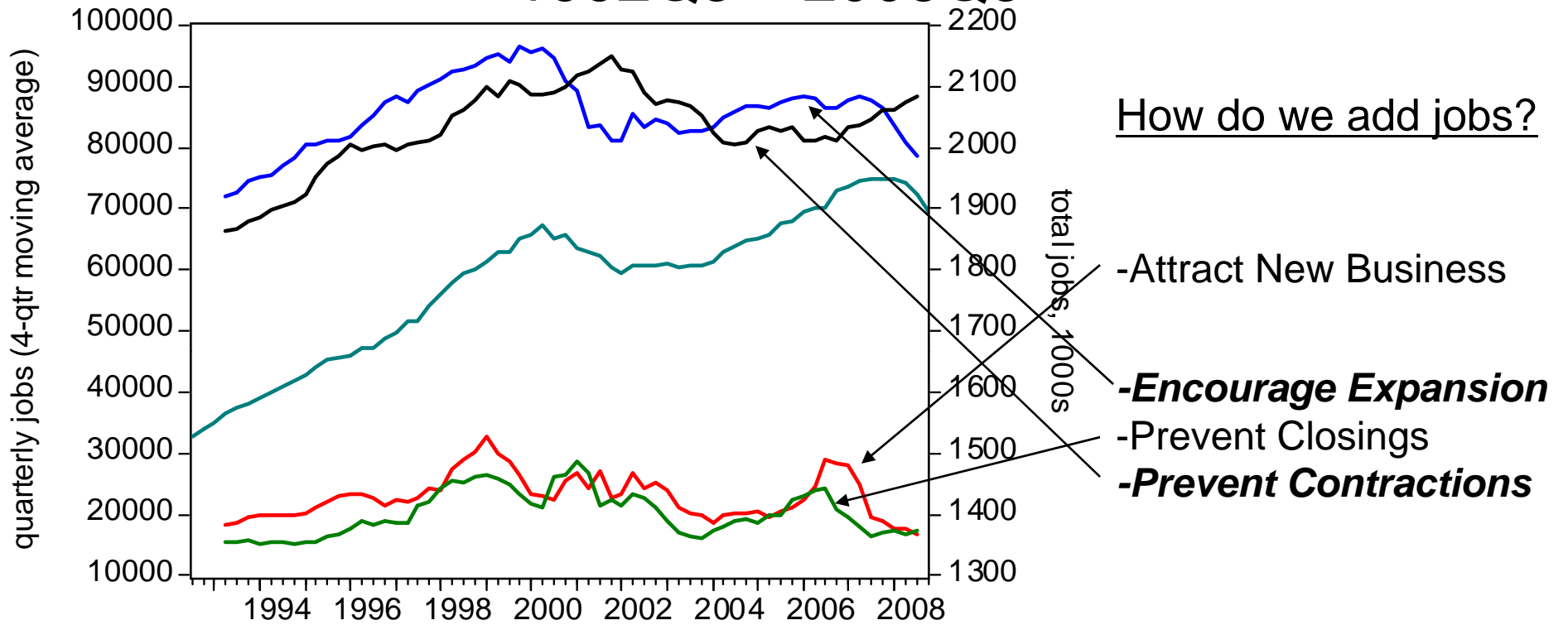


SC Employment Dynamics 1992Q3 – 2008Q3



- Gains - Expansions
- Gains - Openings
- Losses - Closings
- Losses - Contracting
- Total Employment

SC Employment Dynamics 1992Q3 – 2008Q3



- Gains - Expansions
- Gains - Openings
- Losses - Closings
- Losses - Contracting
- Total Employment