



Date: 10/01/09

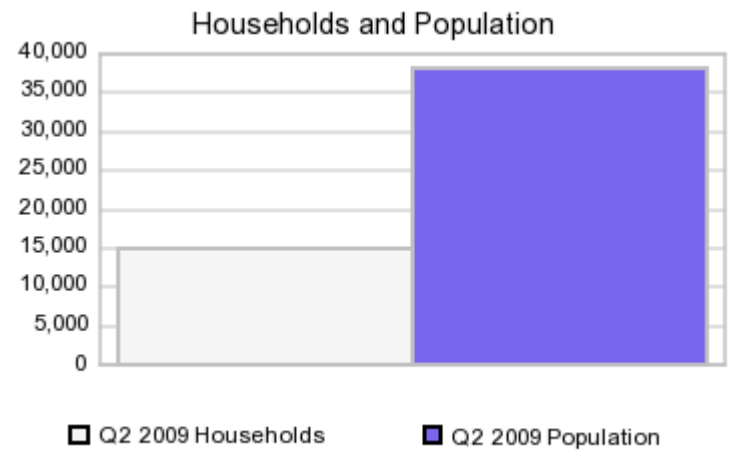
Current Geography Selection: (1 Selected) Counties: Newberry County

Your title for this geography: Newberry County

Current Index Base: State - undefined

Executive Summary Report with Charts

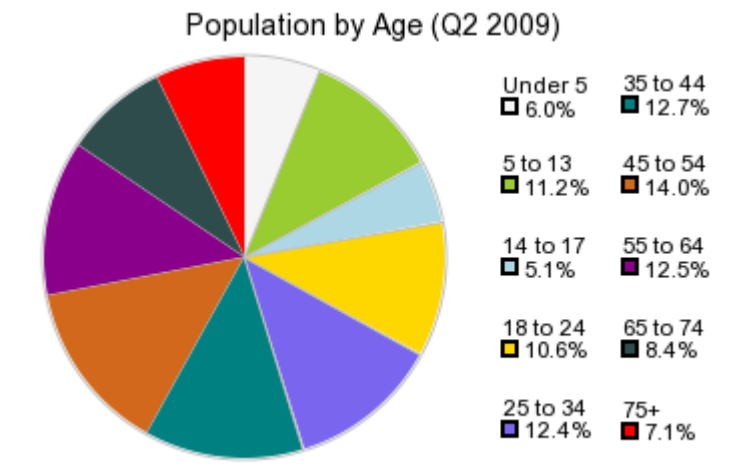
Population Demographics



The number of households in the study area in 2000 was **14,041**. The household count in Q2 2009 is estimated to be **14,918**. For 2014, the High Range of the Five Year forecast was **15,848** and the Low Range was **15,109** with the actual household projection estimated at **15,430**, a change of **3.4%**. The population in the study area in 2000 it was **36,108**. The population in Q2 2009 is estimated to be **38,368**. For 2014, the High Range of the Five Year forecast was **40,708** and the Low Range was **38,866** with the actual household projection estimated at **39,655** representing a change of **3.4%**.

| | 2000 Census | Q2 2009 Estimate | 2014 Projection | Percent Change Q2 2009 to 2014 |
|------------------|-------------|------------------|-----------------|--------------------------------|
| Total Population | 36,108 | 38,368 | 39,655 | 3.4% |
| Total Households | 14,041 | 14,918 | 15,430 | 3.4% |

Population by Age



In 2000, the median age of the population was **37**. The median age in Q2 2009 is estimated to be **39** and it is predicted to change in five years to **40** years.

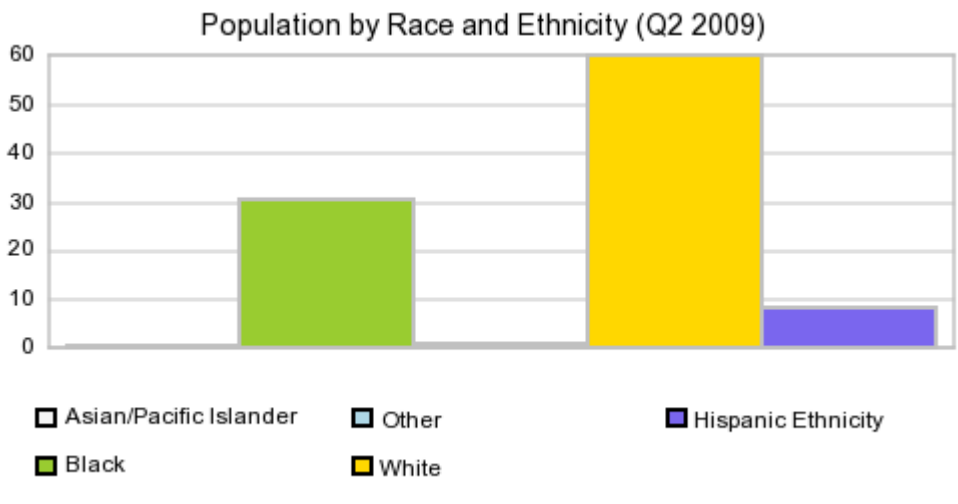
In Q2 2009, females represented **51.5%** of the population with a median age of **41** and males represented **48.5%** of the population with a median age of **37** years.

In Q2 2009, the most prominent age group in this geography is **Age 45 to 54** years. The age group least represented in this geography is **Age 14 to 17** years.

Population by Age

| | 2000 Census | | Q2 2009 Estimate | | 2014 Projection | | Percent Change |
|----------|-------------|-------|------------------|-------|-----------------|-------|-----------------|
| | | | | | | | Q2 2009 to 2014 |
| 0 to 4 | 2,233 | 6.2% | 2,313 | 6.0% | 2,323 | 5.9% | 0.4% |
| 5 to 13 | 4,102 | 11.4% | 4,288 | 11.2% | 4,277 | 10.8% | -0.3% |
| 14 to 17 | 2,367 | 6.6% | 1,969 | 5.1% | 1,965 | 5.0% | -0.2% |
| 18 to 24 | 3,525 | 9.8% | 4,060 | 10.6% | 4,018 | 10.1% | -1.0% |
| 25 to 34 | 4,601 | 12.7% | 4,768 | 12.4% | 5,212 | 13.1% | 9.3% |
| 35 to 44 | 5,502 | 15.2% | 4,872 | 12.7% | 4,706 | 11.9% | -3.4% |
| 45 to 54 | 4,895 | 13.6% | 5,365 | 14.0% | 5,327 | 13.4% | -0.7% |
| 55 to 64 | 3,510 | 9.7% | 4,792 | 12.5% | 5,046 | 12.7% | 5.3% |
| 65 to 74 | 2,696 | 7.5% | 3,217 | 8.4% | 3,929 | 9.9% | 22.1% |
| 75 + | 2,677 | 7.4% | 2,724 | 7.1% | 2,852 | 7.2% | 4.7% |

Population by Race/Ethnicity

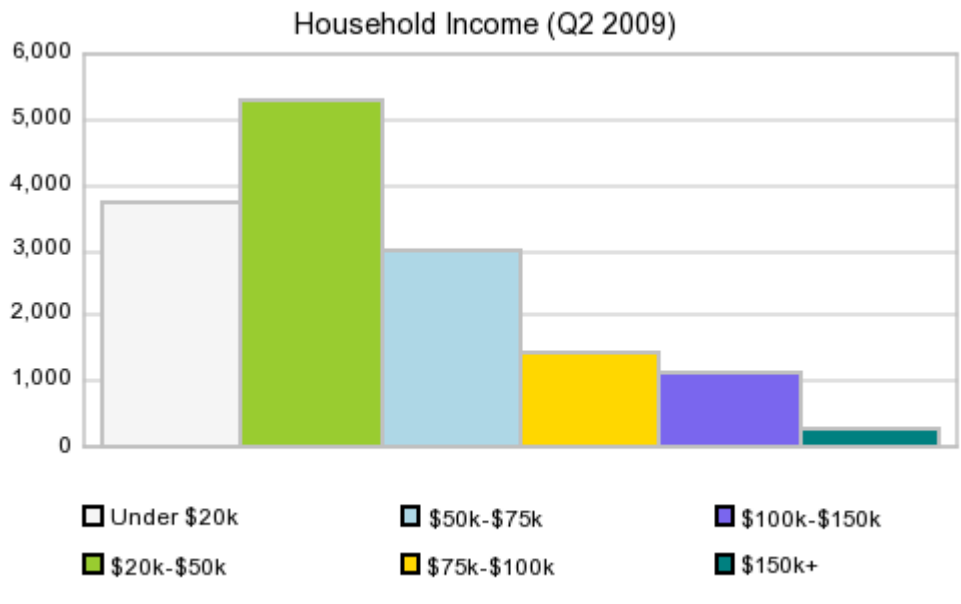


In Q2 2009, the predominant race/ethnicity category in this study area is **White**. The race & ethnicity category least represented in this geography is **Asian**.

Population by Race/Ethnicity

| | 2000 Census | | Q2 2009 Estimate | |
|--------------------|-------------|-------|------------------|-------|
| | | | | |
| White | 23,194 | 64.2% | 25,857 | 67.4% |
| Black | 11,930 | 33.0% | 11,939 | 31.1% |
| Asian | 39 | 0.1% | 135 | 0.4% |
| Other Race | 945 | 2.6% | 437 | 1.1% |
| Hispanic Ethnicity | 1,613 | 4.5% | 3,212 | 8.4% |

Households by Income



In Q2 2009 the predominant household income category in this study area is **\$20K - \$50K**, and the income group that is least represented in this geography is **\$150K +**.

Households by Income

| | 2000 Census | | Q2 2009 Estimate | |
|-----------------------|-------------|-------|------------------|-------|
| \$0 - \$19,999 | 4,234 | 30.2% | 3,743 | 25.1% |
| \$20,000 - \$49,999 | 5,728 | 40.8% | 5,293 | 35.5% |
| \$50,000 - \$74,999 | 2,337 | 16.6% | 3,001 | 20.1% |
| \$75,000 - \$99,999 | 1,029 | 7.3% | 1,432 | 9.6% |
| \$100,000 - \$149,999 | 564 | 4.0% | 1,117 | 7.5% |
| \$150,000 + | 149 | 1.1% | 256 | 1.7% |
| Average Hhld Income | \$40,527 | | \$49,631 | |
| Median Hhld Income | \$33,142 | | \$40,524 | |
| Per Capita Income | \$15,759 | | \$19,297 | |

Current year data is for the year **2009**, 5 year projected data is for the year **2014**. More About Our Data.
 Demographic data © 2009 by Experian/Applied Geographic Solutions.
 Source: Synergos Technologies, Inc., Austin, TX. All Rights Reserved.
 Traffic Count data © 2009 by DataMetrix. All rights reserved.

© 2009. **DDR is brought to you by SRC, LLC.**

SRC, DemographicsNow.com and the SRC and DemographicsNow.com logos are trademarks of SRC, LLC. All rights reserved.

Privacy Statement | License Agreement