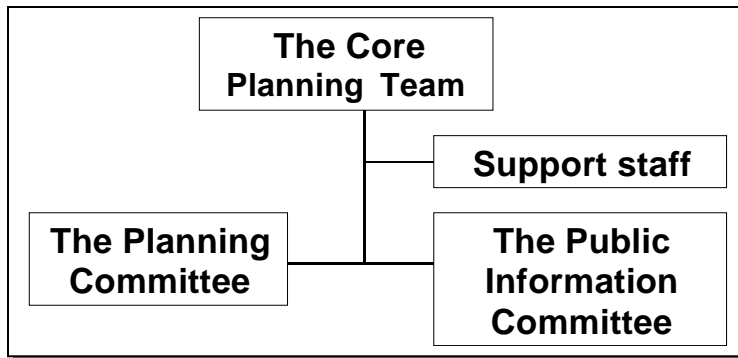


Section I

Introduction and Purpose

A. Description of the Planning Process Used to Develop the Plan

The Central Midlands Regional Risk Assessment and Hazard Mitigation Committee (CPT) is made up off representatives of the major local governments in each county of the region. This section describes the local jurisdictions participating in the CPT and discusses the organizational structure used to complete the planning process. It also



provides a summary of the current status of planning activities by the participants.

The CPT organizational Structure

The Core Planning Team encourages participation in the risk assessment and hazard mitigation process by all interested local jurisdictions, agencies, organizations and individuals. This was accomplished by creating county-based risk assessment and hazard mitigation committees with a broad and varied invitation list to each of the four committees. (See the membership in Tables 1-C through F below. Those committees working with the CPT are intended to represent a partnership between the public and private sector of the community, working together to create a disaster resistant community. The proposed mitigation initiatives developed by the participating local governments and other entities in providing input into this plan with ideas and initiatives are intended, when implemented, to make the entire region safer from the impacts of future natural disasters for the benefit of every individual, neighborhood, business and institution.

The Central Midlands Regional Risk Assessment and Hazard Mitigation Committee (CPT) Organizational Structure

The responsibilities and duties of this organizational structure are detailed in the bylaws and operating procedures of the CPT adopted in 2003 and provided in Volume II. This section summarizes the roles of the different components of the CPT and describes the participation that has occurred during the planning period covered by this document.

This organizational structure provides for oversight and coordination of the entire planning effort by the CPT comprised of individuals formally appointed by their respective jurisdictions. A table listing the designated representatives of participating organizations is included in this section.

The CPT functions as an executive committee working to coordinate the activities and work of the county-based risk assessment and hazard mitigation committees. The CPT represents key local governments in the region, and is the group that makes the official decisions regarding the planning process. CPT serves in a liaison role with local governments and the county-based risk assessment and hazard mitigation committees and it makes assignments to the Planning and Public Information Committees and coordinates their activities. Most importantly for this document, however, is the Core Planning Team's role to be responsible for review and approval of proposed mitigation initiatives submitted by jurisdictions participating in this process and for removing or terminating initiatives that are no longer desirable for implementation. In no way are the activities of the CPT intended to supplant or negate the input or priorities of local jurisdictions as they considered a wide range of hazards and the means to mitigate their impacts.

The Central Midlands Regional Risk Assessment and Hazard Mitigation Committee (CPT) has benefited from the assistance and support of its many members that serve on its three committees, and a table listing the members and their committee affiliation is also included. Participation in the Planning Committee and Public Information Committee is not limited in any manner, and all members of the community, whether representing the public or private sector, are welcome to participate on one of these committees.

The Planning Committee coordinates the actual technical analyses and planning activities that are fundamental to development of this plan. These activities include conducting the hazard identification and vulnerability assessment processes, as well as receiving and coordinating the mitigation initiatives that are proposed by the CPT force participants for incorporation into this plan.

Individual jurisdictions, and their agencies and local organizations, are really the key to accomplishing the planning process. The effort begins with developing a community profile of each participating jurisdiction in Central Midlands Region to document the basic characteristics of their community that are relevant to controlling the impacts of disasters. The jurisdictions then conduct vulnerability assessments of their key facilities, systems and neighborhoods within or serving their area to define, specifically, how these may be vulnerable to the impacts of all types of disasters. Finally, the jurisdictions and their organizations use the vulnerability assessments to prioritize natural hazards that threatening their jurisdictions and/or communities and to identify measures and steps to mitigate the effects of natural hazards, and to formulate and characterize mitigation initiatives that they could implement if the resources to do so became available. Once these proposed initiatives are coordinated by the Planning Committee, the CPT can then

incorporate them into An All Natural Hazard Mitigation Plan and Risk Assessment for the Central Midlands Region of South Carolina

Current Status of Participation in the Core Planning Team

In order to support the participating jurisdictions in the completion of the community profiles and vulnerability assessments, the Planning Committee sets a schedule each technical analysis step, provides training in the evaluations needed, and distributes the necessary forms for completion. The jurisdictions then complete the assignments and return the forms to the Planning Committee. The information provided on these forms is that used to create this plan.

In addition to completing the community profile and vulnerability assessments for the Planning Committee, the participating jurisdictions and organizations are expected to use the results of these assessments to propose needed hazard mitigation initiatives for incorporation into the All Natural Hazard Risk Assessment and Hazard Mitigation Plan for the Central Midlands Region of South Carolina

In the winter of 2003, staff of the Central Midlands Council of Governments (CMCOG) invited representatives of local jurisdictions from each of the four counties to participate in a CPT called for purposes of this plan the Central Midlands Regional Risk Assessment and Hazard Mitigation Committee (CPT). This committee worked in turn with the Hazard Mitigation Risk Assessment Committees established in each county. These broad based local committees had as their membership representatives of local general and special purpose governments and other organizations in each county interested in mitigating the effects of natural disasters. A copy of the letters to members of the CPT and the county based hazard mitigation and risk assessment committees are attached to this document as Appendix 1.

The CPT also performed as the public awareness/public education committee, the partnership development committee emphasizing regional cooperation and collaboration. The work of both the CPT and the four county Risk Assessment and Hazard Mitigation Planning Committees prepared this plan structured at the county level and is also intended to be a regional document focusing upon and emphasizing commonalities and opportunities for coordinated response to natural hazardous occurrences. The following chart outlines the steps and time taken to complete the plan.

**Table I-A
Project Planning Timeline for Major Work Elements**

| | | |
|--------|-----------------------------------------------------------------------------------|-----------------------------------|
| Step 1 | Establish the Core Planning Team | Complete from 1/1/03 to 1/31/03 |
| Step 2 | Gather Data and Hazard Information in Each County | Complete from 2/1/03 to 9/30/03 |
| Step 3 | Appoint and Established County Based Hazard and Risk Assessment Comm. | Complete from 9/3/03 to 12/31/03 |
| Step 4 | Hold First Public Meeting in Each County | Complete from 12/1/03 to 12/31/03 |
| Step 5 | Prepare Body of Plan Identifying Hazards and Linking Them to Mitigation Measures | Complete from 1/1/04 to 3/31/04 |
| Step 6 | Devise Action Plan for Prioritizing and Implementing Mitigation Measures | Complete from 3/31/04 to 4/30/04 |
| Step 7 | Prepare Procedure to Update the Plan and Keep Viable | Complete from 4/30/04 to 5/31/04 |
| Step 8 | Finish First Draft and Hold Final Public Meeting | Complete 6/1/04 to 6/30/04 |
| Step 9 | Make Final Revisions and Submit to EPD with letters of support from Local Govern. | Complete from 7/1/04 to 7/15/04 |

Approaches to further open and active public involvement are detailed in D below.

B. Structure of the Final Document

The plan is formatted so that the general public can easily follow the process used to

- a. Describe and profile the natural hazards that most affect and concern each county
- b. Assess vulnerable populations and assets in each county
- c. Assess risks varying from one county to another in the region

- d. Identify, evaluate and analyze specific goals, mitigation actions and projects that would reduce the effects of identified hazards
- e. Devise an action plan for prioritizing, implementing, and administering recommended mitigation actions and projects
- f. Outline a procedure to monitor, evaluate, and update the hazard mitigation within a five-year period
- g. Devise the process that participating jurisdictions could use to incorporate plan recommendations into local plans and capital improvements programs
- h. Explanation of the means recommended ensuring continued public involvement in the ongoing mitigation planning process

In the initial chapters on the background of the region data are presented in as much of a regional approach as possible. However, because responses to hazards and mitigation projects are mostly county-based, this data has been presented at the county level for ease of comprehension and use.

Numerous appendices are be used to include data that would otherwise break the flow of the document and that would be better placed in an appendix for reference by technicians and specialists in hazard mitigation rather than by the general public who are the planned principal users of this plan.

C. The Procedure for Jurisdictional Participation in the Planning Process

The planning process used in the Central Midlands region and its four counties was based on Section 322 local planning requirements of the Disaster Mitigation Act of 2000 and supporting guidance documents developed by FEMA and the S. C. Emergency Preparedness Division (EPD). The planning process included the following steps, which will be described in greater detail throughout the plan:

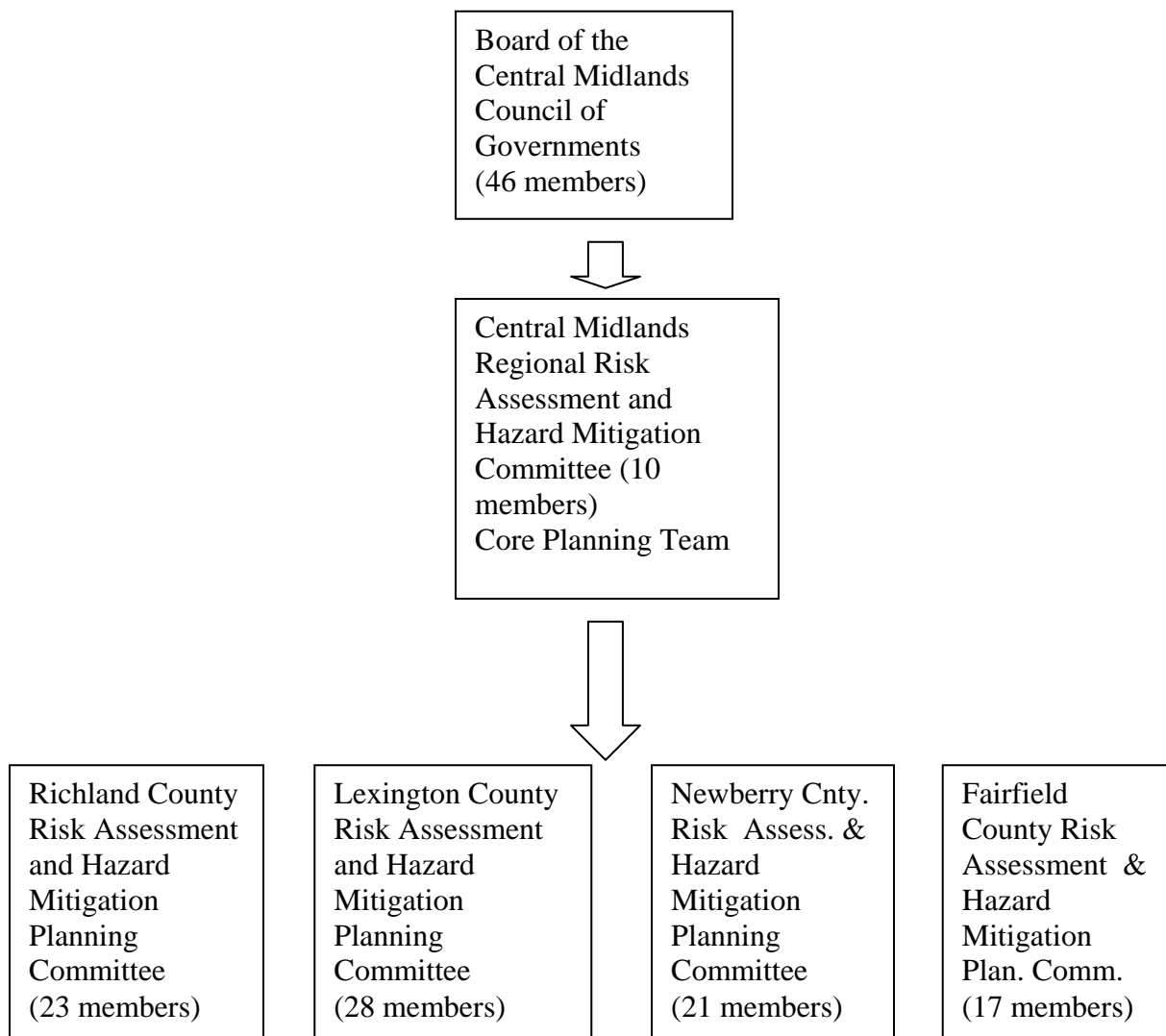
- ◆ Step 1: Establish a Core Planning Team
- ◆ Step 2: Conduct a Risk Assessment
- ◆ Step 3: Develop Capabilities Assessment
- ◆ Step 4: Create the Mitigation Plan
- ◆ Step 5: Adopt and Implement the Plan

This process was led by the members of Central Midlands Regional Risk Assessment and Hazard Mitigation Committee (CPT) and supported by the planning staff of the Central Midlands Council of Governments.

The CPT had the role of plan oversight and development but it worked alongside and with the support of Risk Assessment and Mitigation Planning Committees in each county

of the region. The committee also determined whether a jurisdiction met the threshold for participation in the planning process. A jurisdiction had to do one or more of the following: (1) Participate in the activities of the Core Planning Team, (2) Attend a meeting(s) of the county based risk assessment and hazard mitigation committee, (3) respond to letters from staff asking for responses on natural hazard prioritization and mitigation measures, or (4) prepared and approved an action plan and adopted the All Natural Hazards Risk Assessment and Hazard Mitigation Plan for the Central Midlands Region.

The following shows organizational structure established to produce and oversee the completion of the all hazards mitigation and risk assessment plan and to ensure its ongoing implementation.



By creating a hazard mitigation and risk assessment planning committee in each county, all groups involved with or having a role/capacity to respond to emergency/hazard response situations were involved in the risk assessment/capability assessment/mitigation project development process.

The Core Planning Team is comprised of a geographically and functionally wide-ranging membership that was developed after the S. C. EMD entered into a contract with the Central Midlands COG to develop the regional all hazard mitigation plan and risk assessment on May 23, 2002. The membership and units of government served are listed as follows in Table I-B.

**Table I-B
Central Midlands Regional Risk Assessment and Hazard Mitigation Committee
(Core Planning Team)**

| Name | Organization |
|--------------------|-----------------------|
| Ronald Scarboro | City of West Columbia |
| Tom Barber | Newberry County |
| H .E. Edwards, Jr. | Town of Lexington |
| Donnie Shields | City of Forest Acres |
| Ben Baxley | Town of Springdale |
| Mike Byrd | Richland County |
| Neil Ellis | Lexington County |
| Howard Lederfind | City of Columbia |
| Ken Knudsen | City of Cayce |
| Phyllis Watkins | Fairfield County |

This committee explained above has also had a role in functioning as a conduit of information between the COG board and each of the Risk Assessment and Mitigation Planning Committees formed in each county.

The Risk Assessment and Hazard Mitigation Planning Committees created in each of the four counties examined the risk potential of the county and each of the municipalities therein as well as assess vulnerabilities to natural hazards. These committees formed in the fall of 2003 comprised representatives from counties; municipalities; special purpose utility districts; non-profit agencies; educational organizations such as colleges, universities, and technical colleges; school districts; and recreation commissions.

Table I-C
Richland County Risk Assessment and Hazard Mitigation
Planning Committee

| Name | Organization | Name | Organization |
|-------------------|------------------------------------|----------------------|------------------------------------|
| Milton Morris | Benedict College | Robert Allen | Richland County Recreation Commis. |
| Robert Chestnut | Richland School Dist 1 | Randy Mahan | SCANA/SCE&G |
| Larry Johnson | Columbia Emergency Operations | Howard Lederfind | Columbia Emergen. Operations |
| John Hanson | Town of Irmo | Judy Spell | Columbia/Richland 911 Committee |
| Fred Hoose | Lex. School Dist. 5 | Susan Cutter | USC Geography Department |
| Kyle Oden | S. C. Emergency Mgmt Division | Donnie Shields | City of Forest Acres |
| Freddy Vang | S. C. Dept of Natural Resources | Christopher Campbell | Mayor of Eastover |
| Michael A. Byrd | Richland County Emergency Services | Mike Dawson | River Alliance |
| Robert E. Davis | Richland School District 2 | J. Donald Dial | Alpine Utilities |
| Richard W. Thomas | Mayor of Arcadia Lakes | Jim Cagney | S. C. Dept of Transportation |
| Stan Jones | Palmetto Utilities | Roland Ballow | Mayor of Blythewood |
| Paul Livingston | Midlands Technical College | | |

Table I-D
Lexington County Risk Assessment and Hazard Mitigation
Planning Committee

| Name | Organization | Name | Organization |
|-------------------|---------------------------------------|-----------------|-------------------------------------|
| Barry Bolen | Lexington School District 2 | John Hanson | Town of Irmo |
| W. M. Gummerson | Lexington School District 3 | Randy Mahan | SCANA/SCE&G |
| Charles Haggard | Mayor of Pelion | Mike Burkhold | Town of Swansea |
| Cecil McClary | Lexington School District 4 | David L. Busby | Town of Pine Ridge |
| H. Bedenbaugh | Lexington School District 1 | Jim Cagney | S. C. Dept of Transportation |
| Daryle Fontenot | S. C. Dept of Natural Resources | Ronald Scarboro | Fire Chief, City of West Columbia |
| Mark Forrester | Gilbert-Summit Water District | Jay Criscione | Lexington County Recreation & Aging |
| Stan Shealy | Mayor of Chapin | Johnny White | Mayor of South Congaree |
| Gene Edwards, Jr. | Town of Lexington | Joan Taylor | Town of Batesburg-Leesville |
| Susan Cutter | USC Dept of Geography | Ken Knudsen | City of Cayce |
| Paul Livingston | Midlands Technical College | Philip Price | Mayor of Gilbert |
| Director | Gaston Water District | Mike Dawson | River Alliance |
| Neil Ellis | Lexington County Emergency Prepare. | Pete Hankins | Lexington Hospital Medical Services |
| Bill Bull | Director, Lexington Joint Muni. W & S | Kyle Oden | S. C. Emergency Preparedness Div. |

Table I-E
Newberry County Risk Assessment and Hazard Mitigation
Planning Committee

| Name | Organization | Name | Organization |
|-----------------------|----------------------------------|-----------------------|------------------------------------|
| Chief Joe Palmer | Newberry City Fire Department | Jay Foster | Clemson Extension Service |
| Chief John Pollard | Silverstreet Fire Department | Freddy Vang | S. C. Dept of Natural Resources |
| Daniel P. Murphy | Newberry Electric Cooperative | Arnold Lingle | Newberry County Water & Sewer Aut. |
| Randy Mahan | SCANA/SCEG | Darryl S. Hentz | Mayor of Pomaria |
| Kyle Oden | S. C. Emergency Mgmt. Division | Lewis Shealy | Mayor of Peak |
| David L. Wilson, Jr. | Newberry County Hospital | Thomas P. Barber, III | Newberry Cnty Public Safety |
| Timothy Carroll | Mayor of Whitmire | Charles Guerry | Newberry City Utilities |
| Rufus Rogers | Newberry County School District | Mitchell S. Zais | President, Newberry College |
| James Lee Foster | Newberry County Sheriff | Phillip Brooks | S. C. Dept of Transportation |
| Lex Walter | President Piedmont Tech. College | Bruce Connelly | Mayor of Prosperity |
| O. L. "Buddy" Johnson | Mayor of Little Mountain | | |

**Table I-F
Fairfield County Risk Assessment and Hazard Mitigation
Planning Committee**

| Name | Organization | Name | Organization |
|---------------|-----------------------------------|-----------------|-----------------------------------|
| Rufus Jones | Mayor of Ridgeway | William L. Hart | Fairfield County Cooperative |
| Keith Lewis | Fairfield Sheriff's Department | Director | Mid-County Water Company |
| Tony Hill | Fairfield Co. Fire Marshall | Lisa Jones | S. C. Depart of Natural Resources |
| Director | Jenkinsville Water Company | Director | Fairfield County Airport |
| Randy Mahan | SCANA/SCE&G | Phyllis Watkins | Fairfield Cnty. Emergency Prep. |
| Kyle Oden | S. C. Emergency Preparedness Div. | Mike Tanner | Fairfield County EMS |
| Beth Bonds | Winnsboro Env. Coordinator | Superintendent | Fairfield County School District |
| Larry Dozier | Fairfield Memorial Hospital | Director | Mitford Rural Water District |
| Jerry Brannon | S. C. Dept of Transportation | | |

To implement federal planning initiatives requiring local hazard mitigation plans, the CPT recommended that each county direct its resources to hazard identification, risk assessment, and specification of projects to mitigate the impact of hazardous occurrences. Hazard Mitigation and Risk Assessment Planning Committees in each county were tasked with most of the activities related to the development of this plan. They submit their collected information and input to the CPT. The county-based committees worked with the CPT to ensure that local content and recommendations are included in the final plan as approved local governments affected by the plan.

The CPT discussed the composition of the county-based hazard and risk assessment committees in 2003 to ensure that widespread community participation in each of the hazard mitigation and risk assessment committees. Their work resulted in a list of names and organizations to be contacted via mail with the time, date and place of the first meeting to be held at the county level. That invitation also presented the work activities expected of each county committee and the timetable for completion of all work prior to placing the draft in the hand of the state EPD and FEMA in mid-July 2004.

Minutes of the meetings of the CPT and the county committees along with newspaper ads for those meetings and a list of members attending and participating are attached to this plan in Volume 2.

D. Citizen Participation Procedures and the Process for Citizen Involvement

To ensure open and active public involvement in the planning process, two meetings were held in each county, the first meeting scheduled early in the writing of the draft stage so that the public would better understand the purpose of the planning process and know that their input is necessary for the production of a successful hazard mitigation and risk assessment planning document. The public would also better interact with the county level hazard mitigation and risk assessment committees. The second public meeting was held prior to the submission of the final draft to state EPD and the Federal Emergency Management Agency (FEMA). These steps gave citizens and those interested in hazard mitigation an opportunity to have their voices heard before FEMA approval of the plan.

After FEMA plan approval the draft, local governments were given the opportunity to adopt the plan by resolution thereby enabling them to receive hazard mitigation grants after a natural disaster.

Times and places of county meetings were advertised in newspapers of general circulation in each county with information included as to where copies of the drafts could be inspected and where comments and input could be submitted.

Copies of newspaper advertisements, citizen comments gleaned from public meetings and the minutes of the public meetings in each county are included in Volume 2 of this plan.

Working with the staff of the Central Midlands Council of Governments (CMCOG), the Central Midlands Regional Risk Assessment and Hazard Mitigation Committee (CPT) of the Council of Governments prepared this multi-governmental hazard plan and assessment for consideration and adoption by local jurisdictions desiring to secure approval of or credit for the plan by the Federal Emergency Management Agency (FEMA).

E. The Adoption Process for the Plan

After the completion of the first draft including citizen input after the first public meeting, the governments participating at the county level reviewed the draft and submit a letter to the CPT indicating their support or the changes they recommend if they can be demonstrated to be cost-effective, environmentally sound, and technically feasible. The draft was submitted to the State Hazard Mitigation Officer at EPD. The EPD Hazard Mitigation Officer reviewed the document in concert with FEMA. After completion of FEMA review and incorporation of any suggestions or necessary revisions, the document was submitted to participating and affected local governments for adoption by formal resolution.

F. Jurisdictions within the Central Midlands Region Participating in the Risk Assessment and Hazard Mitigation Process and Plan

The local governments and agencies listed below are those that are participating in the risk assessment and hazard mitigation process and plan. Participation is defined as participating in the formal development of this document through involvement on the county-based committees, the submission of data and materials for inclusion in the plan, and the eventual presentation of the document to the public and its adoption by resolution. Participation in the plan development process by an agency does not necessarily mean that agency will adopt the plan.

Table I-G

A List by County of the Local Governments and Agencies Participating in the Regional Risk Assessment and Hazard Mitigation Plan

Participating Richland County Governments and Agencies

| | |
|----------------------------|--------------------------------------|
| Richland County | City of Columbia |
| City of Forest Acres | Town of Irmo |
| Richland School District 1 | Town of Arcadia Lakes |
| Richland School District 2 | Richland-Lexington School District 5 |
| Town of Blythewood | |

Participating Fairfield County Governments and Agencies

| | |
|----------------------------|--------------------------|
| Fairfield County | Town of Winnsboro |
| Jenkinsville Water Company | Mid-County Water Company |

Participating Newberry County Governments and Agencies

| | |
|-------------------------|--------------------|
| Newberry County | City of Newberry |
| Town of Whitmire | Town of Prosperity |
| Town of Little Mountain | Town of Peak |
| Town of Pomaria | |

Participating Lexington County Governments and Agencies

| | |
|-------------------------------------|---------------------------------------|
| Lexington County | Town of Lexington |
| City of West Columbia | City of Cayce |
| Town of Batesburg-Leesville | Town of Springdale |
| Town of Swansea | Town of Gilbert |
| Town of Chapin | Town of South Congaree |
| Irmo-Chapin Recreation Commission | Town of Pelion |
| Gilbert-Summit Rural Water District | Lexington County Joint Municipal W&S |
| Lexington County School District 1 | Lexington County School District 2 |
| Lexington County School District 3 | Richland/Lex County School District 5 |
| Gaston Rural Water District | |

G. A Sample Advertisement for the Plan and a Suggested Format for the Adoption Resolution for Execution by Each Governing Body Requesting Approval of the Plan

A display advertisement for the presentation of the plan to the public will be published in a newspaper of general circulation in each participating jurisdiction at least two weeks before a regularly scheduled meeting of the county or municipal council. This advertisement will address the purpose and content of the plan and solicit citizen review and input of the draft plan before it is adopted by resolution of the affected governing council.

Notice of Availability for Review and Public Comment

An All Natural Hazards Risk Assessment and Hazard Mitigation Plan
for the Central Midlands Region of South Carolina

(Name of Local Government, SC working with the staff of the Central Midlands Council of Governments seeks public comment and input on the draft of the regional risk assessment and natural hazards mitigation plan. The public can access the draft plan on the website of the Central Midlands COG at www.centralmidlands.org from (Month and Day) to (Month, Day, and Year. Individuals seeking to comment on the draft plan should submit their comments to _____, _____ Administrator at _____ prior to the close of business on (Month and Day).

The plan details the nature of the most significant natural hazards threatening local governments in the region. It contains goals and objectives for the (name of local government) as well as mitigation measures to address prioritized natural hazards threatening _____. Adoption by resolution of the regional plan later in 2004 by the _____ Council will make _____ eligible for hazard mitigation grants. It will also involve the local government in more detailed record keeping on the occurrence and cost of natural hazard events as well as a process to update and revise the plan periodically. The public is invited to attend the meeting and to review the draft plan that will be available at the offices of the _____ during working hours and during business days.

The purpose of the plan is to meet the requirements of the Disaster Mitigation Act of 2000 to help make _____ more prepared for and resistant to the effects of natural hazards. Public input is solicited so that the draft may be finalized prior to its submission to the Federal Management Agency.

For further information on the plan please contact Mr. John Huffman at the Central Midlands Council of Governments, 236 Stoneridge Drive, Columbia, SC, 29210, tele. (803) 376-5390.

Email jhuffman@centralmidlands.org

All Natural Hazards Mitigation Plan Adoption Resolution

Resolution # _____ Adopting the All Natural Hazards Risk Assessment and Mitigation Plan for the Central Midlands Region of South Carolina

Whereas, (Name of local government) recognizes the threat that natural hazards pose to people and property; and

Whereas, undertaking hazard mitigation actions before disasters occur will reduce the potential for harm to people and property and save taxpayer dollars; and

Whereas, an adopted all hazards mitigation plan is required as a condition of future grant funding of mitigation projects; and

Whereas, (Name of local government) participated jointly in the planning process with the other units of government in the Central Midlands region of South Carolina to prepare an all hazards mitigation plan;

Whereas, (Name of Local Government) is aware that revision and updating of the plan is critical for active and effective hazard mitigation and that (Name of Local Government) will monitor and record hazard related data and events that can be used to update the all natural hazards mitigation plan;

Now, therefore, be it resolved, that the (Name of governing council), hereby adopts the All Natural Hazards Risk Assessment and Mitigation Plan for the Central Midlands Region as an official plan and will undertake annual recording of hazard events, their impact duration and cost.

Passed: (Date _____)

Certifying Official (_____)
Typed Name and Signature of Chief Administrative or Elected Official