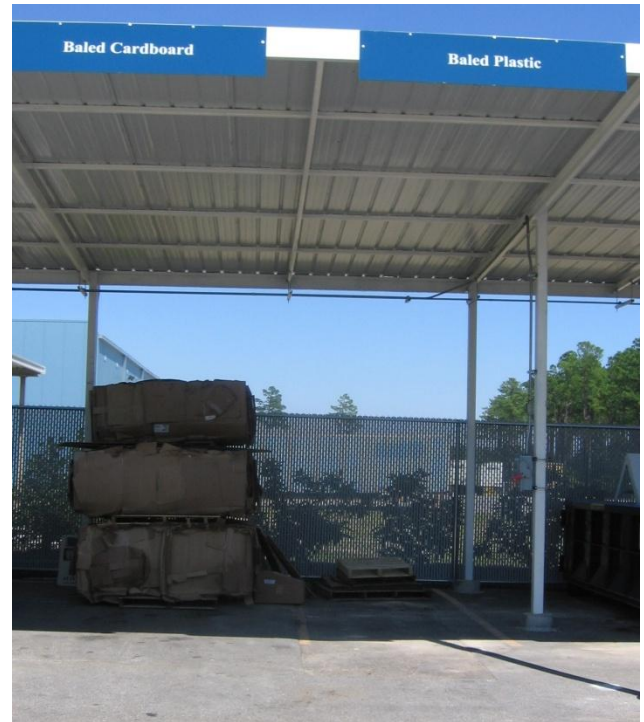


## BOSCH – Columbia South Carolina (ColP)

### Recycling Program and Results



How did we get started?  
Why do we recycle?







**Dunnage Storage Area**



**Office Recycling Bin**



**5S Cleaning Stand**



Lamp Storage Box



Battery Bin



Computer Station



Small Lamp Storage (Bag Must Be Zipped)





Recycled Paper Bin



Canteen Containers- Aluminum and Plastic



Large Bins for Collection



Office Bins



**Awards:**

Medium Size Manufacturer recycler of the year  
Recognition from Lexington County for recycling efforts  
"Palmetto Pride" clean highway sponsorship

**The following items are currently recycled at the Columbia Facility:**

1. Wood Pallets (73 tons YTD)
2. Scrap metal (251 tons YTD)
3. Plastic components and spacers (36.4 tons YTD)
4. Large Plastic bags- baled ( Weight included in #3)
5. Baled Cardboard (75 tons YTD)
6. Batteries- all types (.45 tons YTD)
7. Light Bulbs (.25 tons YTD)
8. Paper- All kinds (7 tons YTD)
9. Bottles, cans and plastic from canteen (1.75 tons YTD)
10. Styrofoam from computer packaging- We pay postage to send off site ( 3 boxes YTD)
11. Hydraulic Fluid is collected re-filtered and re-used
12. Waste Water (109,765 gallons evaporated and not hauled off site for disposal)
13. Ink Cartridges (195 of each) color and black. Phones (13)
14. Electronics (2 tons YTD)

**Landfill:**

Our facility has dramatically reduced the amount of waste being hauled to landfill, saving money on disposal fees and fuel costs to hauler.

**Water Consumption:**

Automatic water valves have been installed to sinks and toilets throughout the facility to reduce water use. Water use has been cut by one quarter to one half.

**Electric Consumption:**

Entire plant is being upgraded to new light fixtures, they light both upward and downward. Old fixture Bulbs are very expensive and output is 20 on a Ohm meter, new fixture bulbs are less expensive and Register over 40 on Ohm meter. Upon completion of project electric costs will be reduced as much as one half.

## Recycling Fun Facts:

1. A television set can run \_\_\_\_\_ hours on the energy saved by recycling 1 aluminum can.

Answer: **3 Hours**

2. If an aluminum can is not recycled, how many years will it remain a can?

Answer: **500 Years**

3. In the United States, recycling steel saves enough energy to heat and light \_\_\_\_\_ homes.

Answer: **18,000,000**

4. To produce each week's Sunday newspapers how many trees must be cut down?

Answer: **500,000**

5. Recycling a single run of the New York Times would save how many trees?

Answer: **75,000**

6. If all newspapers were recycled how many trees would be saved each year?

Answer: **25,000,000**

7. How many paper bags does a supermarket use in a year?

Answer: **60,500,000**

8. The amount of wood and paper we throw away each year is enough to heat 50,000,000 for \_\_\_\_ years.

Answer: **20 years**

9. How many plastic beverage bottles do Americans throw every hour?

Answer: **25,000,000**

10. How many styrofoam cups do Americans throw away each year?

Answer: **25,000,000,000**



11. How many years does it take a modern glass bottle to decompose?

Answer: **4000 or more years**

12. 20,000,000 Hersey Kisses are wrapped in aluminum foil each day, how many square miles of foil is this?

Answer: **133 square miles**

**Example:**

1 ream of paper (500 sheets) weighs 82 ounces

82 ounces/500 sheets = .164 ounces per sheet

We have 200 associates- each throw away **1 pc** of paper per day

$200 \times 1 = 200$  sheets per day  $\times 260$  working days = **52,000 sheet of paper**

$52,000/500 = \mathbf{104}$  reams of paper  $\times 82$  ounces = 8528 ounces/16 = 533 lbs of paper.

$533/2000 = .2665$  ton = **4.53 trees ( 1 ton = 17 trees)**

## Summary